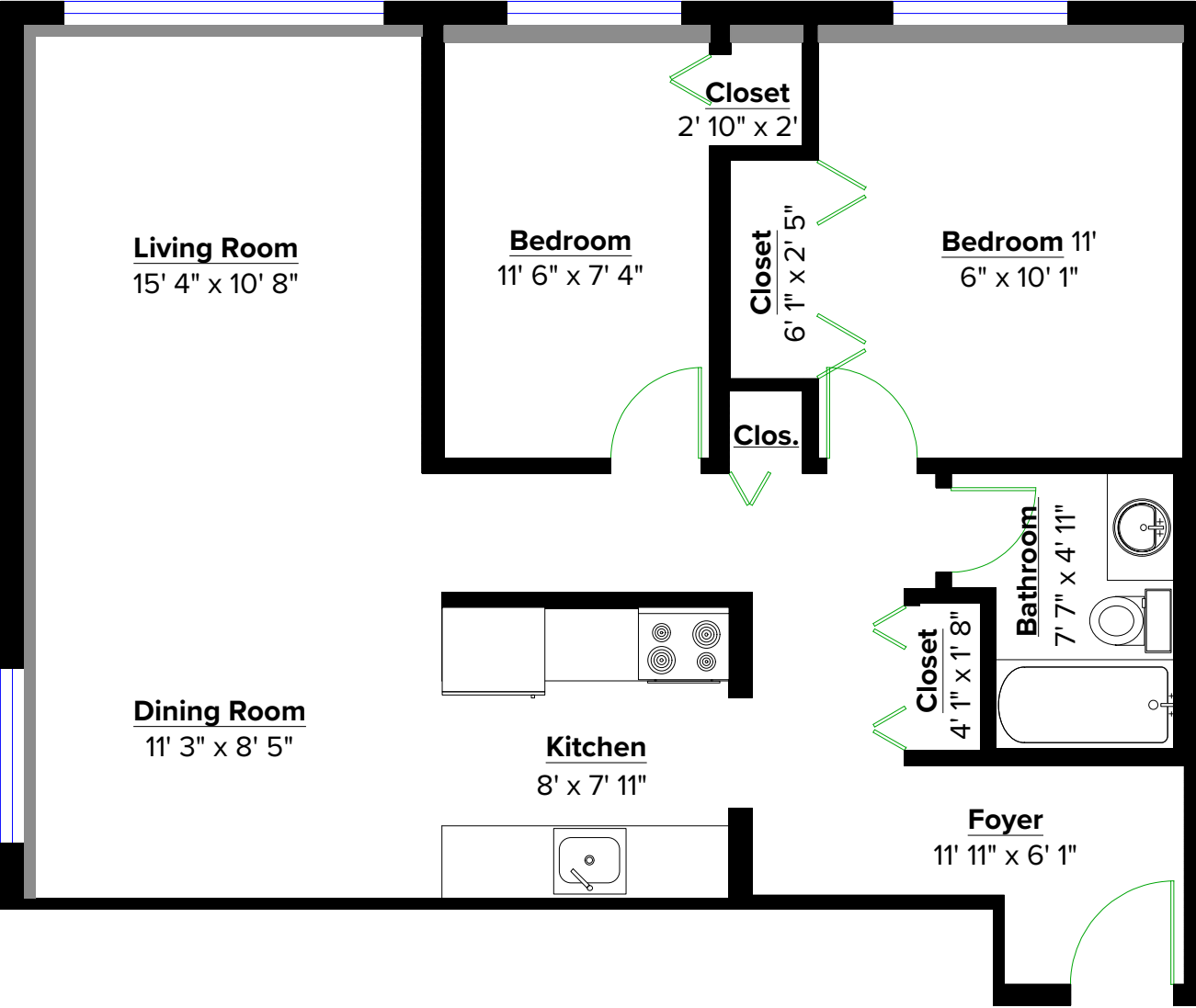


All dimensions are approximate, and no responsibility is taken for any error, omission, or misstatement. Size and specifications to change without notice. This plan is for illustrative purposes only and should be used as such.

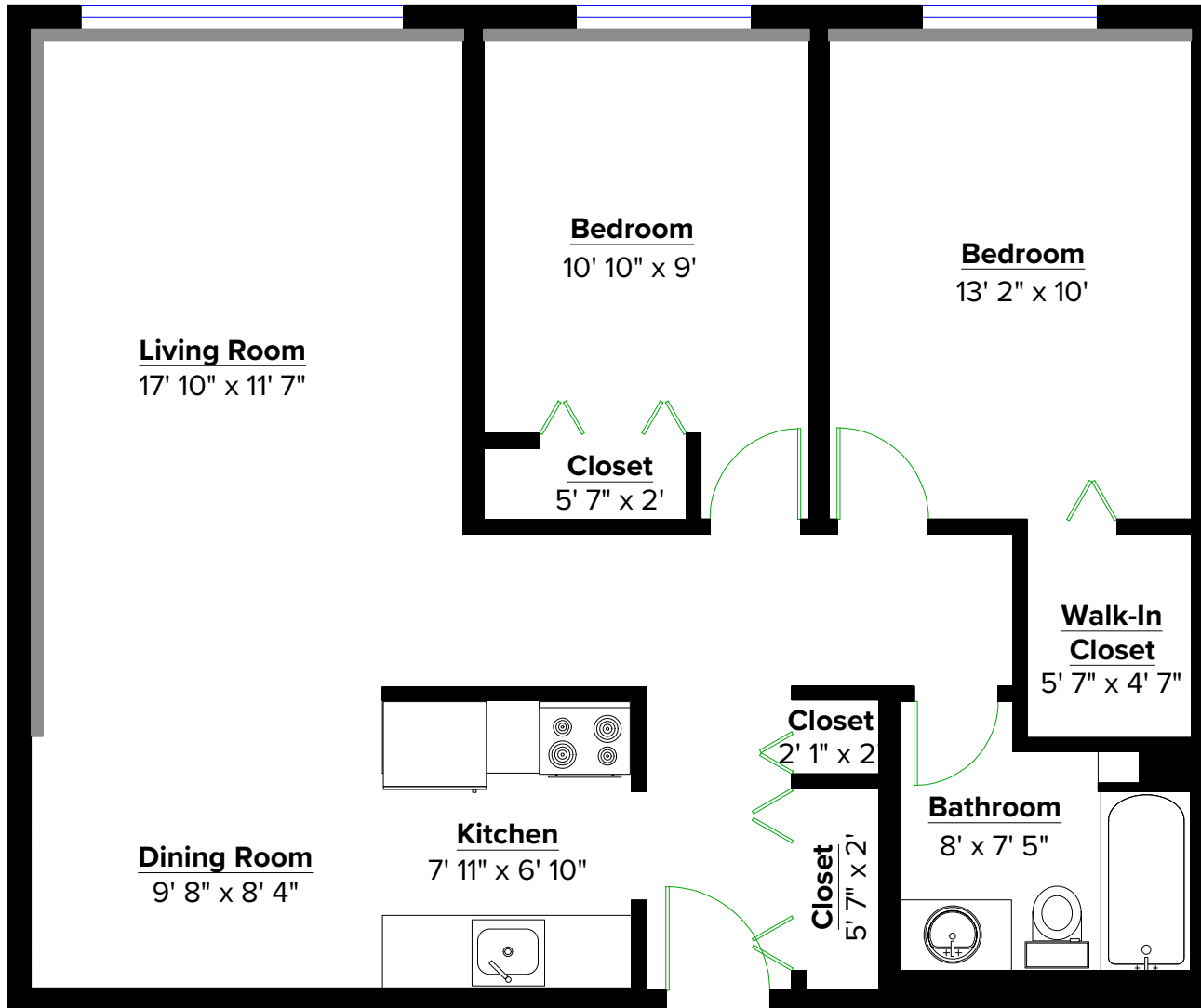
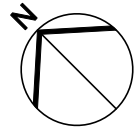
Suite 101

1 Bed 1 Bath - 699 sq. ft.



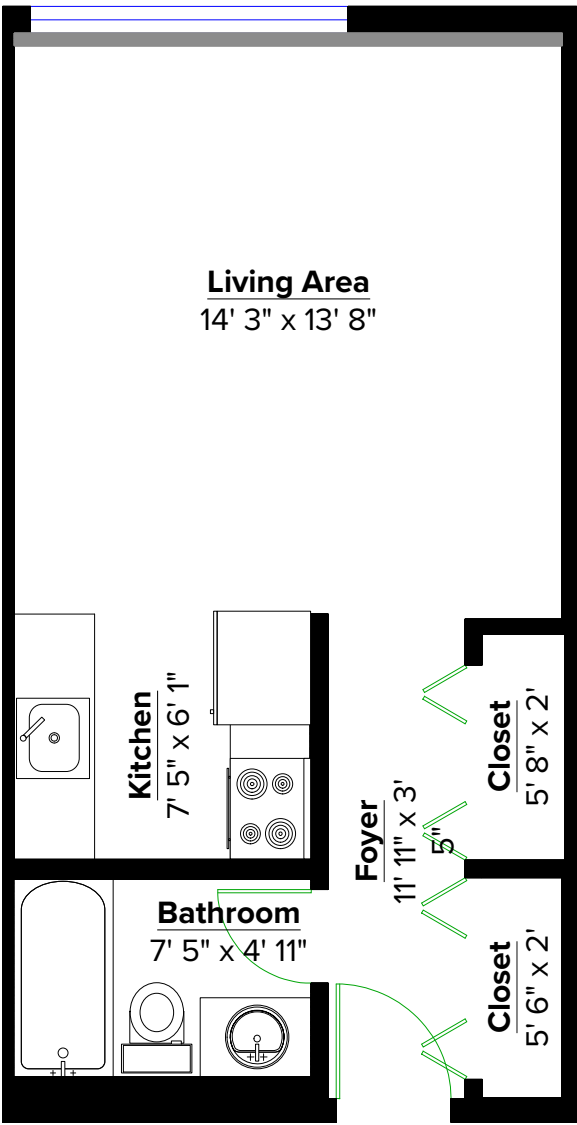
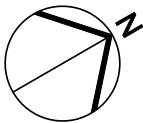
Suite 102

2 Bed 1 Bath - 841 sq. ft.



Suite 104

2 Bed 1 Bath - 913 sq. ft.



All dimensions are approximate, and no responsibility is taken for any error, omission, or misstatement. Size and specifications to change without notice. This plan is for illustrative purposes only and should be used as such.

Suite 106

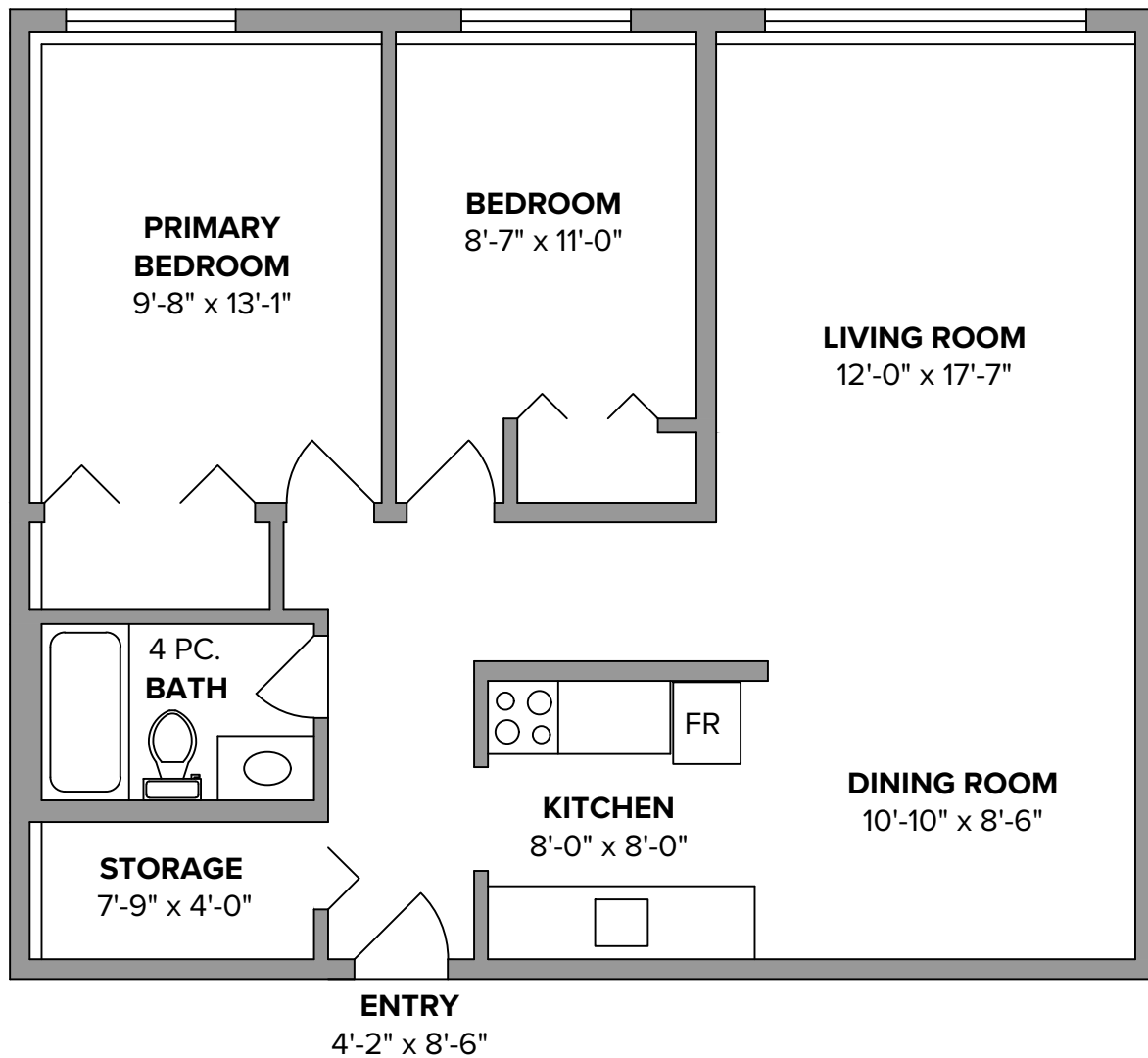
Bachelor - 397 sq. ft.

Terrace Green

180 Croft Street, Victoria, BC



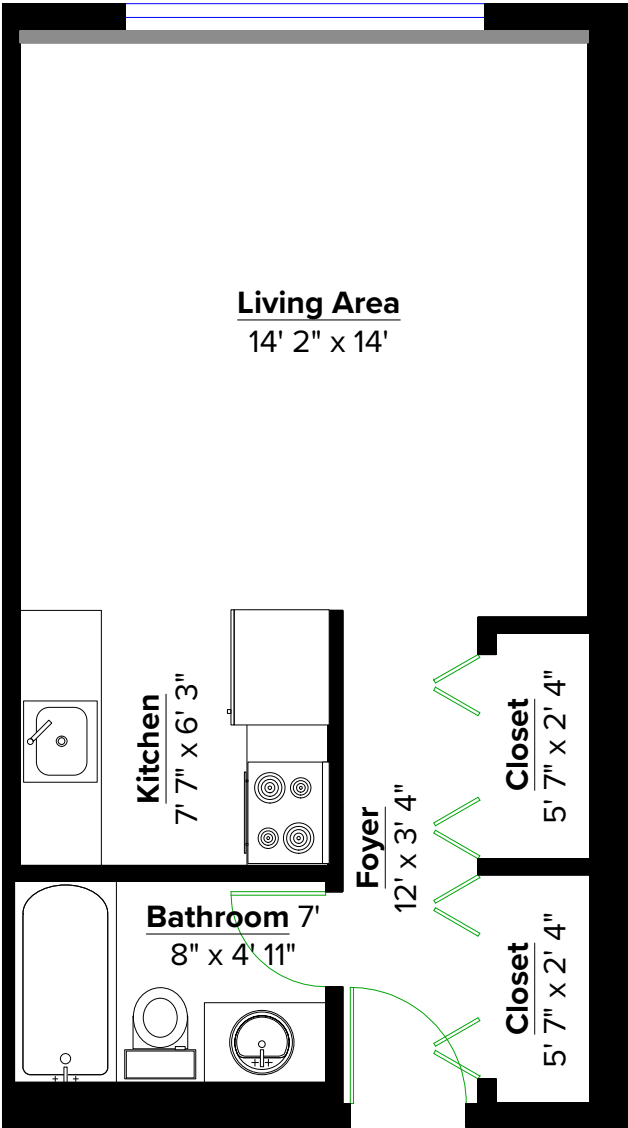
CANADIAN APARTMENT
PROPERTIES • REIT



Suite 108

2 Bed 1 Bath - 871 sq. ft.

All dimensions are approximate, and no responsibility is taken for any error, omission, or misstatement. Size and specifications to change without notice. This plan is for illustrative purposes only and should be used as such.



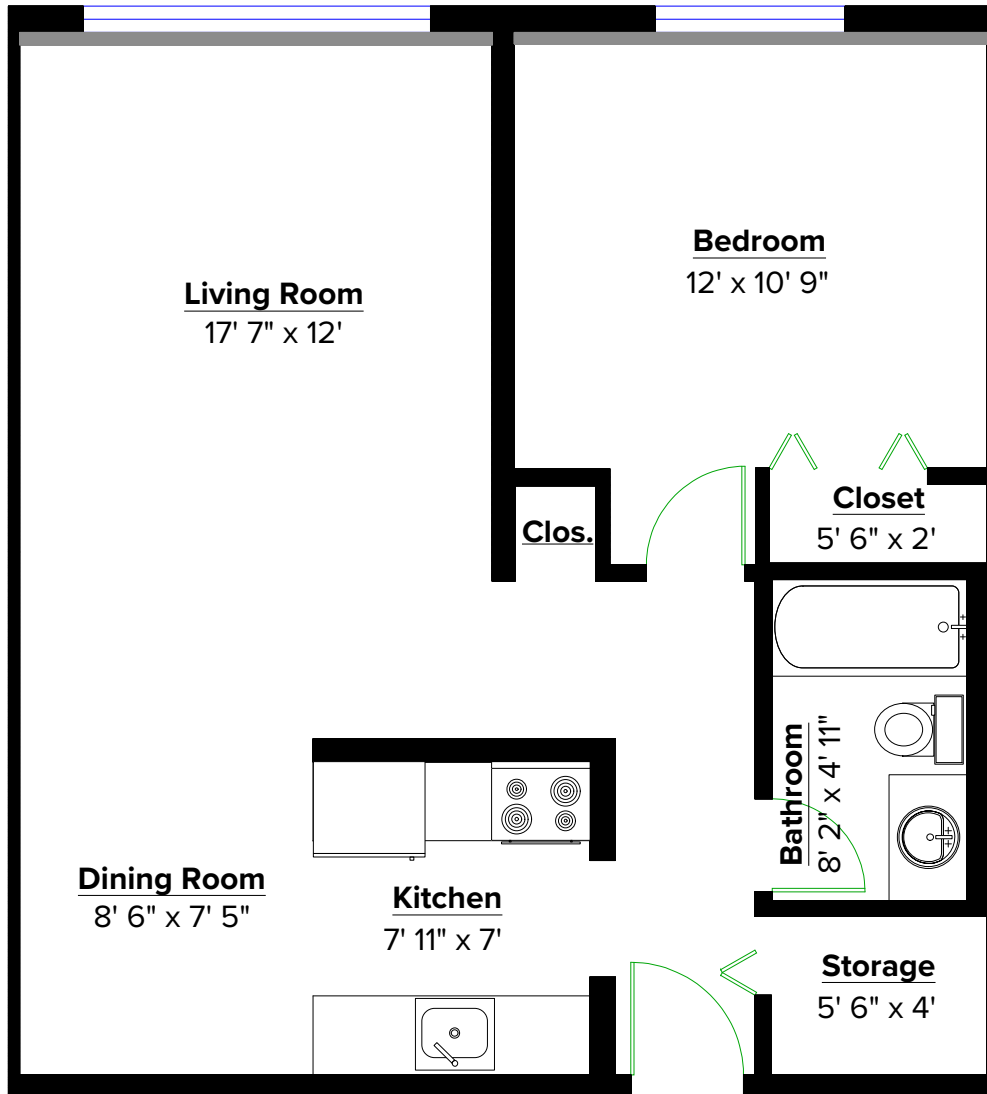
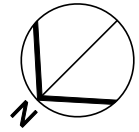
All dimensions are approximate, and no responsibility is taken for any error, omission, or misstatement. Size and specifications to change without notice. This plan is for illustrative purposes only and should be used as such.

Terrace Green

180 Croft Street, Victoria, BC



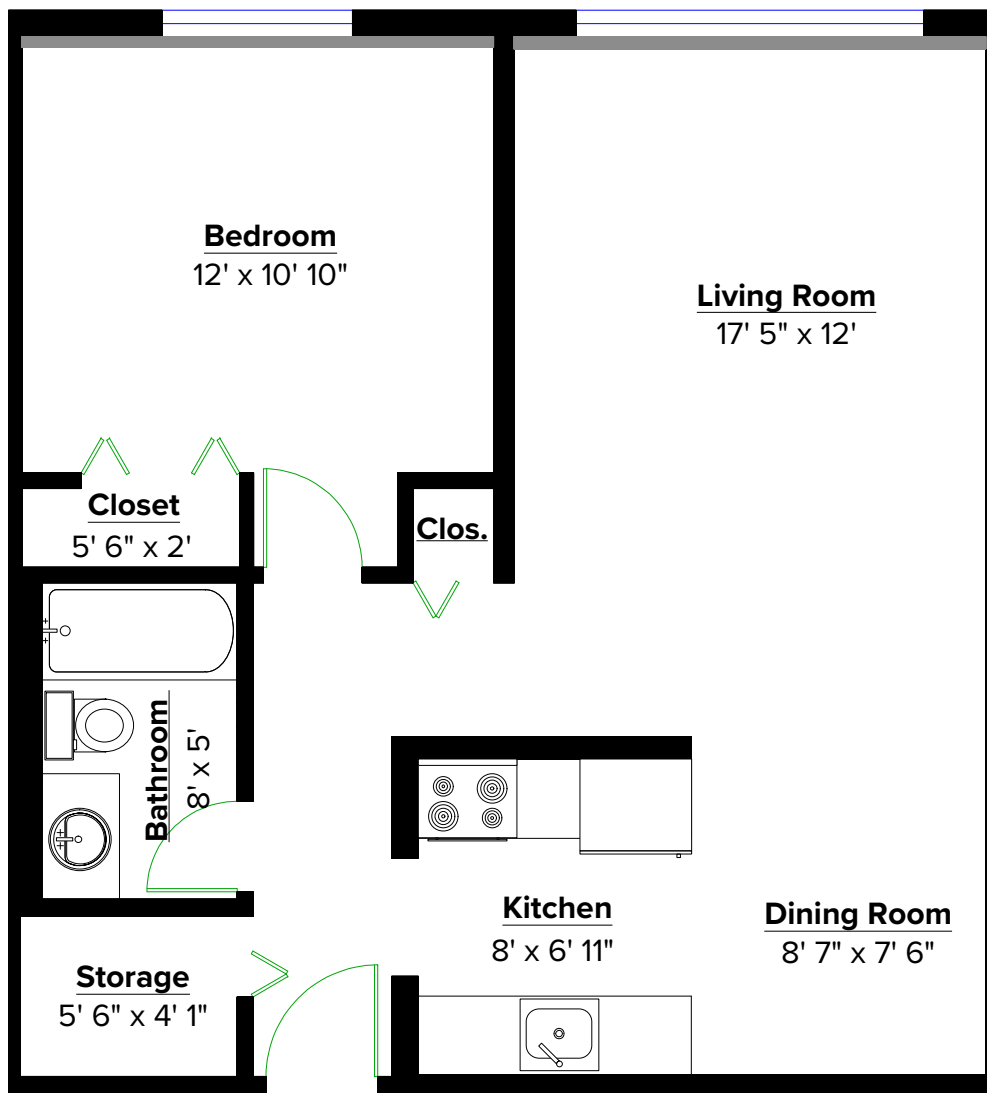
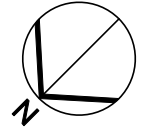
CANADIAN APARTMENT
PROPERTIES • REIT



All dimensions are approximate, and no responsibility is taken for any error, omission, or misstatement. Size and specifications to change without notice. This plan is for illustrative purposes only and should be used as such.

Suite 110

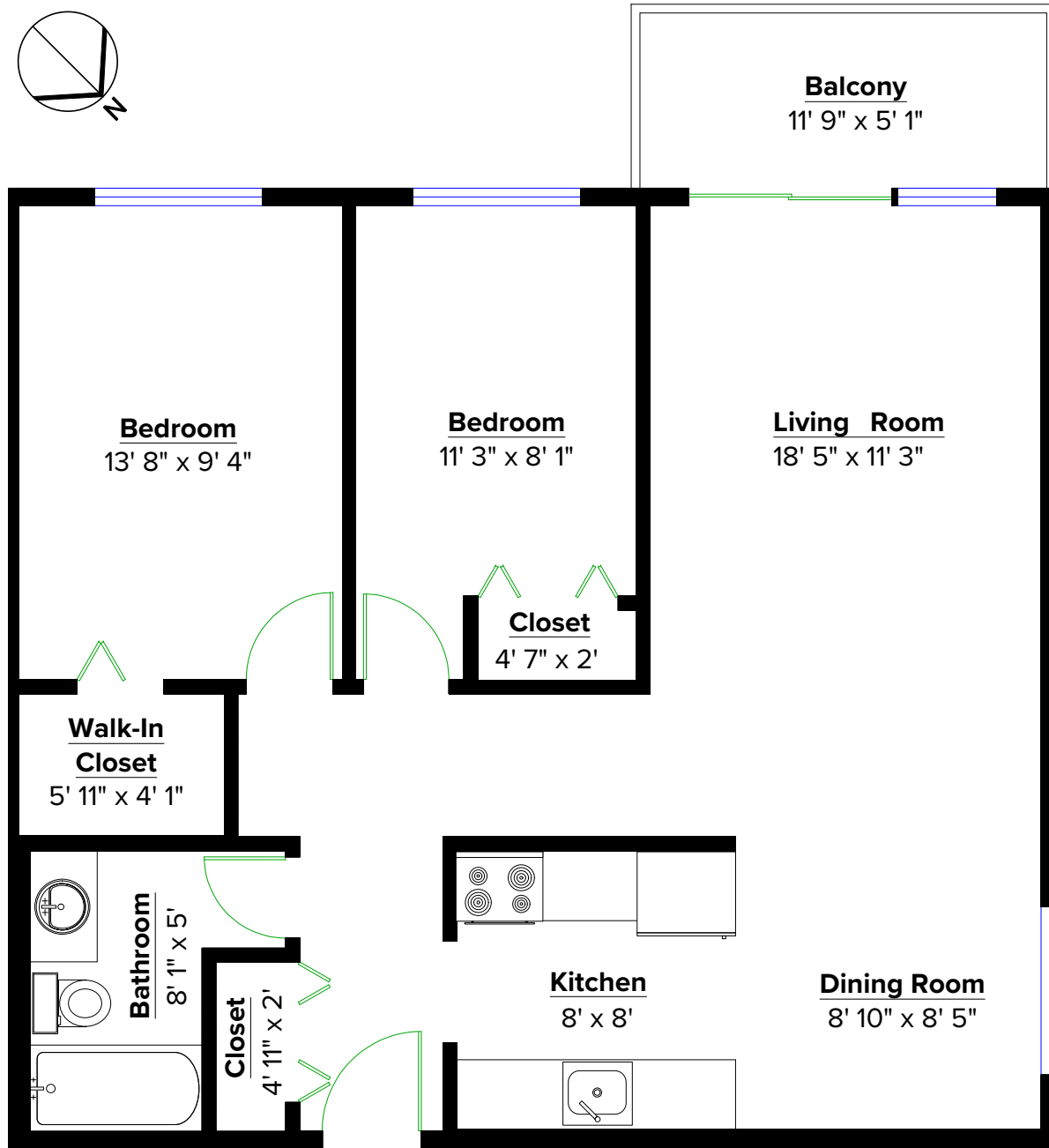
1 Bed 1 Bath - 695 sq. ft.



All dimensions are approximate, and no responsibility is taken for any error, omission, or misstatement. Size and specifications to change without notice. This plan is for illustrative purposes only and should be used as such.

Suite 111

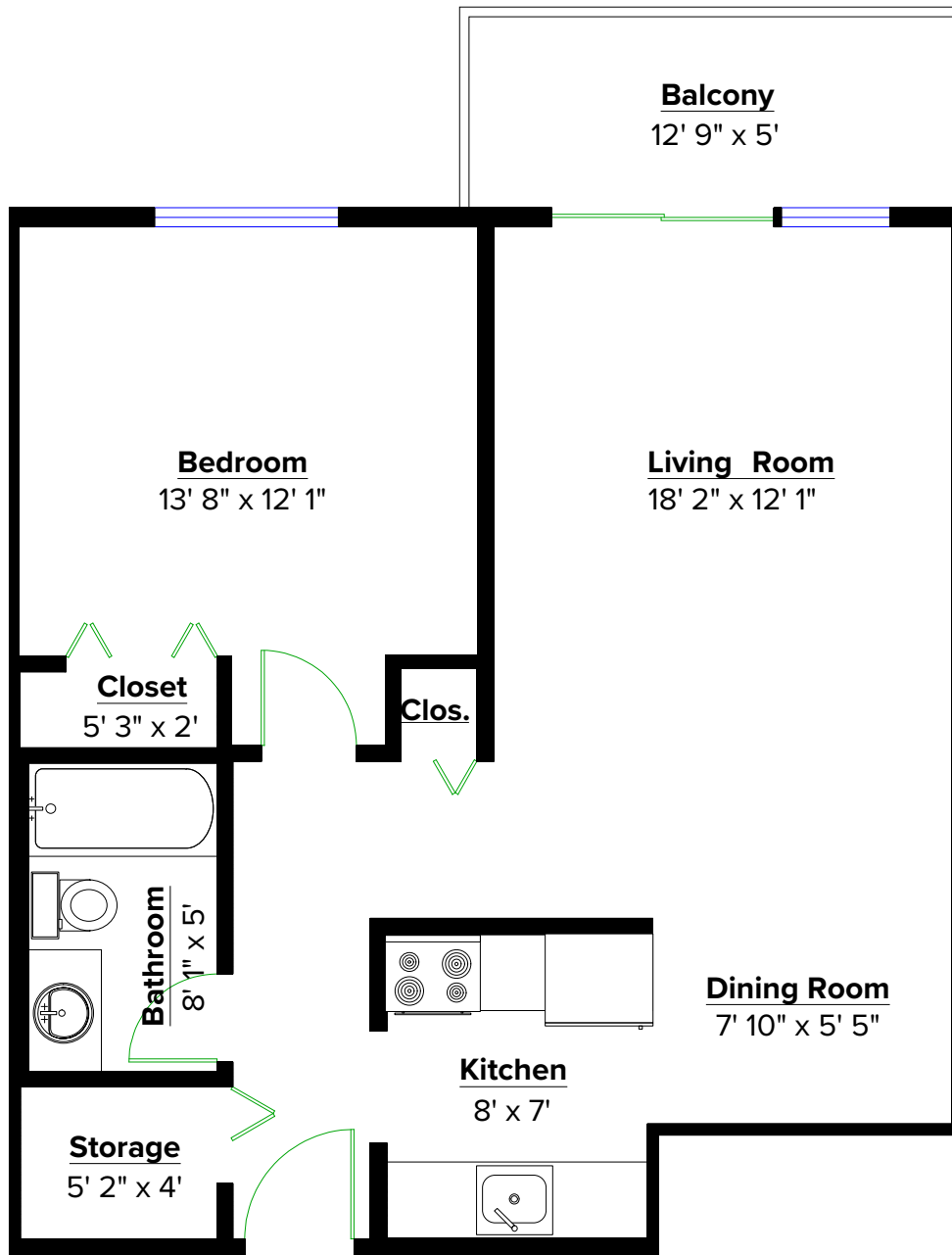
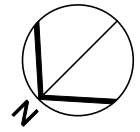
1 Bed 1 Bath - 692 sq. ft.



All dimensions are approximate, and no responsibility is taken for any error, omission, or misstatement. Size and specifications to change without notice. This plan is for illustrative purposes only and should be used as such.

Suite 206

2 Bed 1 Bath - 836 sq. ft.



All dimensions are approximate, and no responsibility is taken for any error, omission, or misstatement. Size and specifications to change without notice. This plan is for illustrative purposes only and should be used as such.

Suite 209

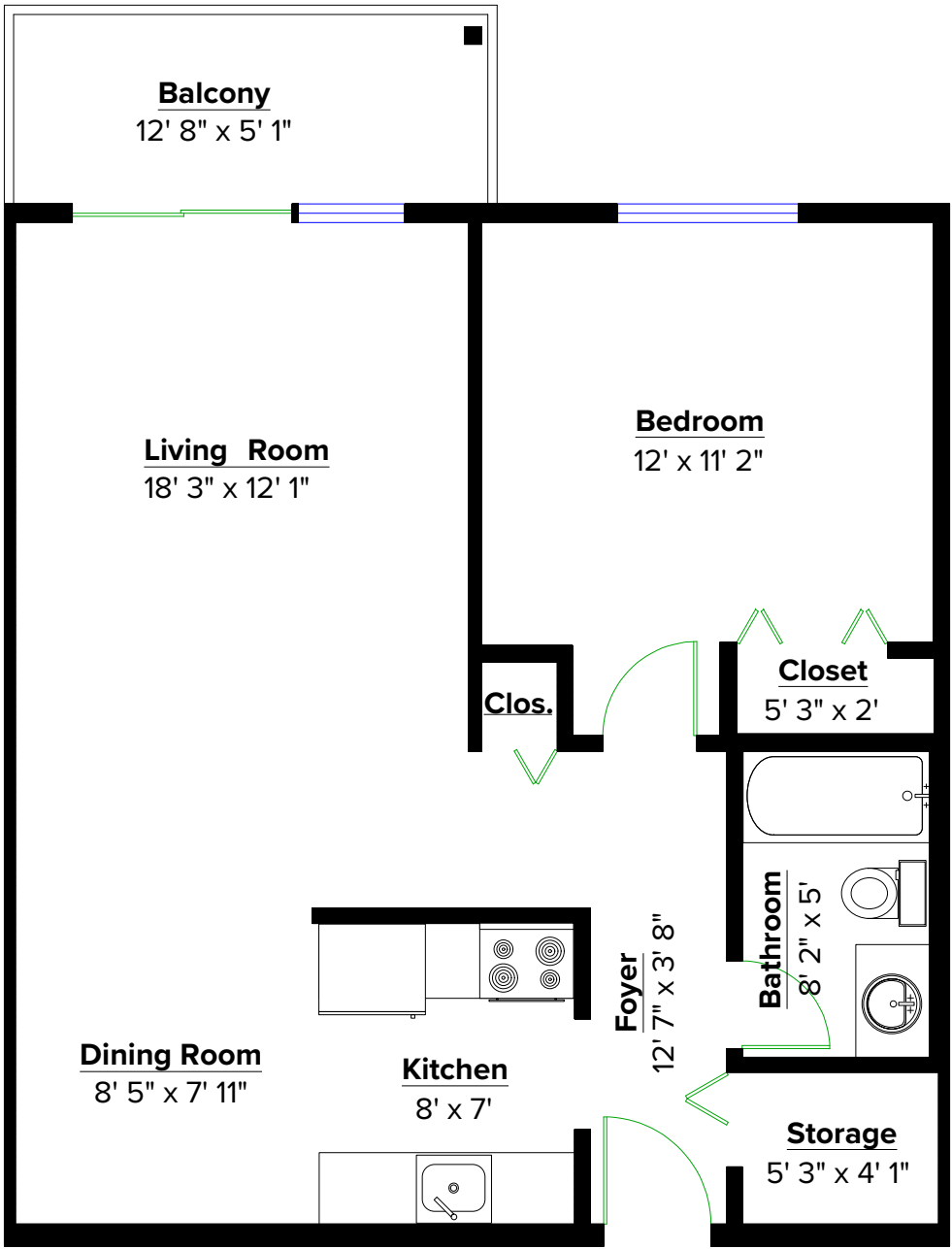
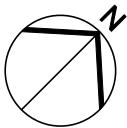
1 Bed 1 Bath - 667 sq. ft.

Terrace Green

180 Croft Street, Victoria, BC



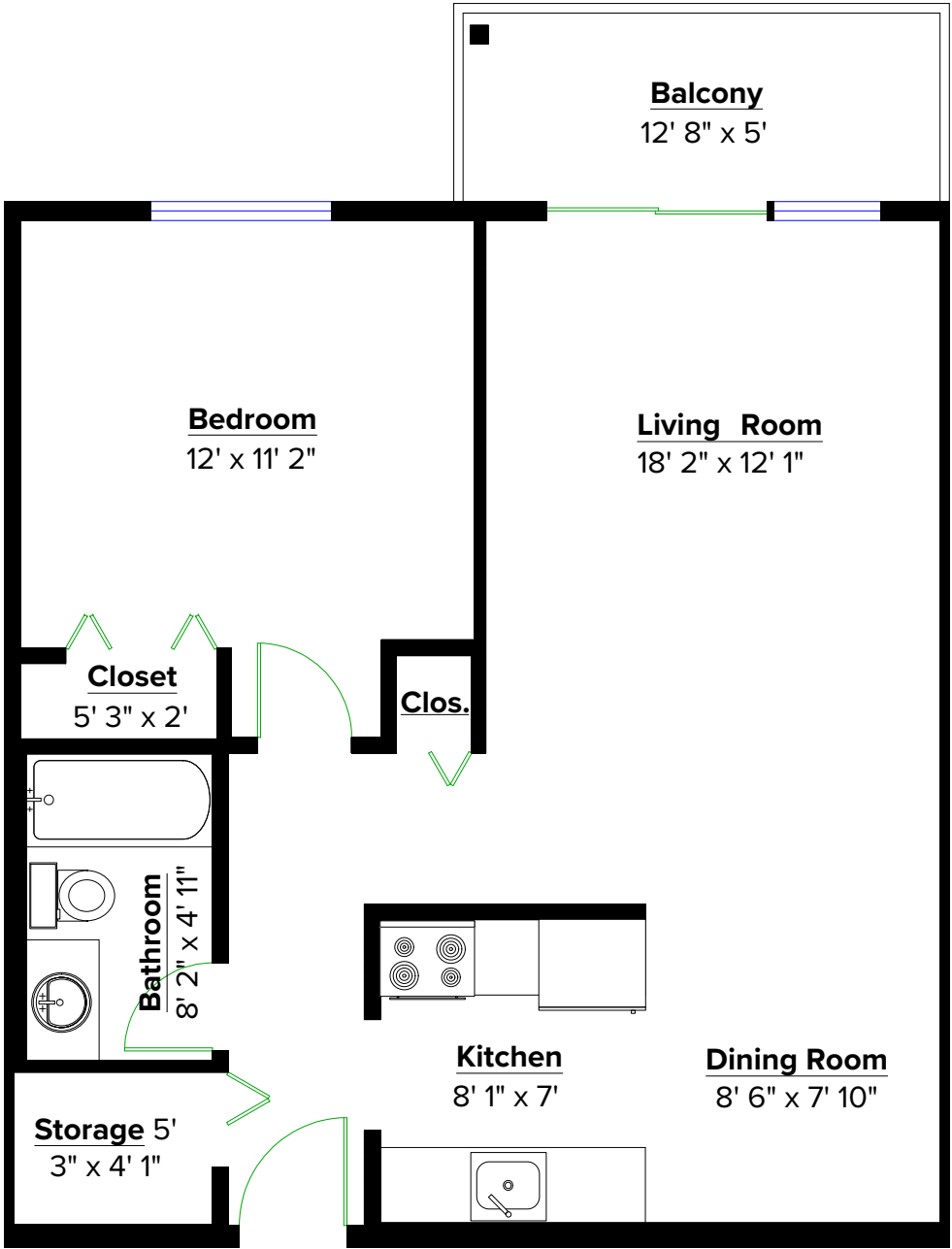
CANADIAN APARTMENT
PROPERTIES • REIT



All dimensions are approximate, and no responsibility is taken for any error, omission, or misstatement. Size and specifications to change without notice. This plan is for illustrative purposes only and should be used as such.

Suite 210

1 Bed 1 Bath - 698 sq. ft.



All dimensions are approximate, and no responsibility is taken for any error, omission, or misstatement. Size and specifications to change without notice. This plan is for illustrative purposes only and should be used as such.

Suite 211

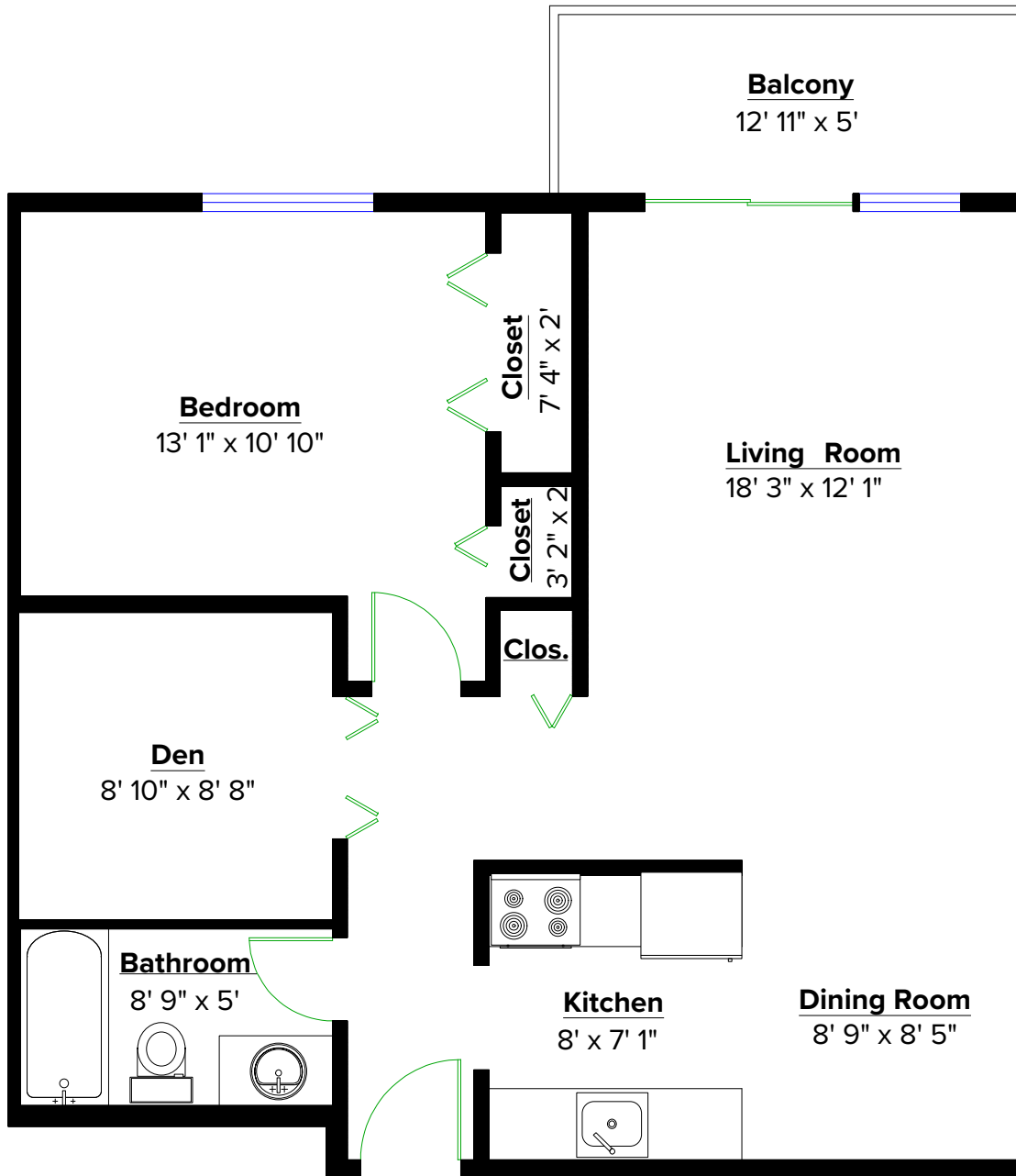
1 Bed 1 Bath - 695 sq. ft.

Terrace Green

180 Croft Street, Victoria, BC



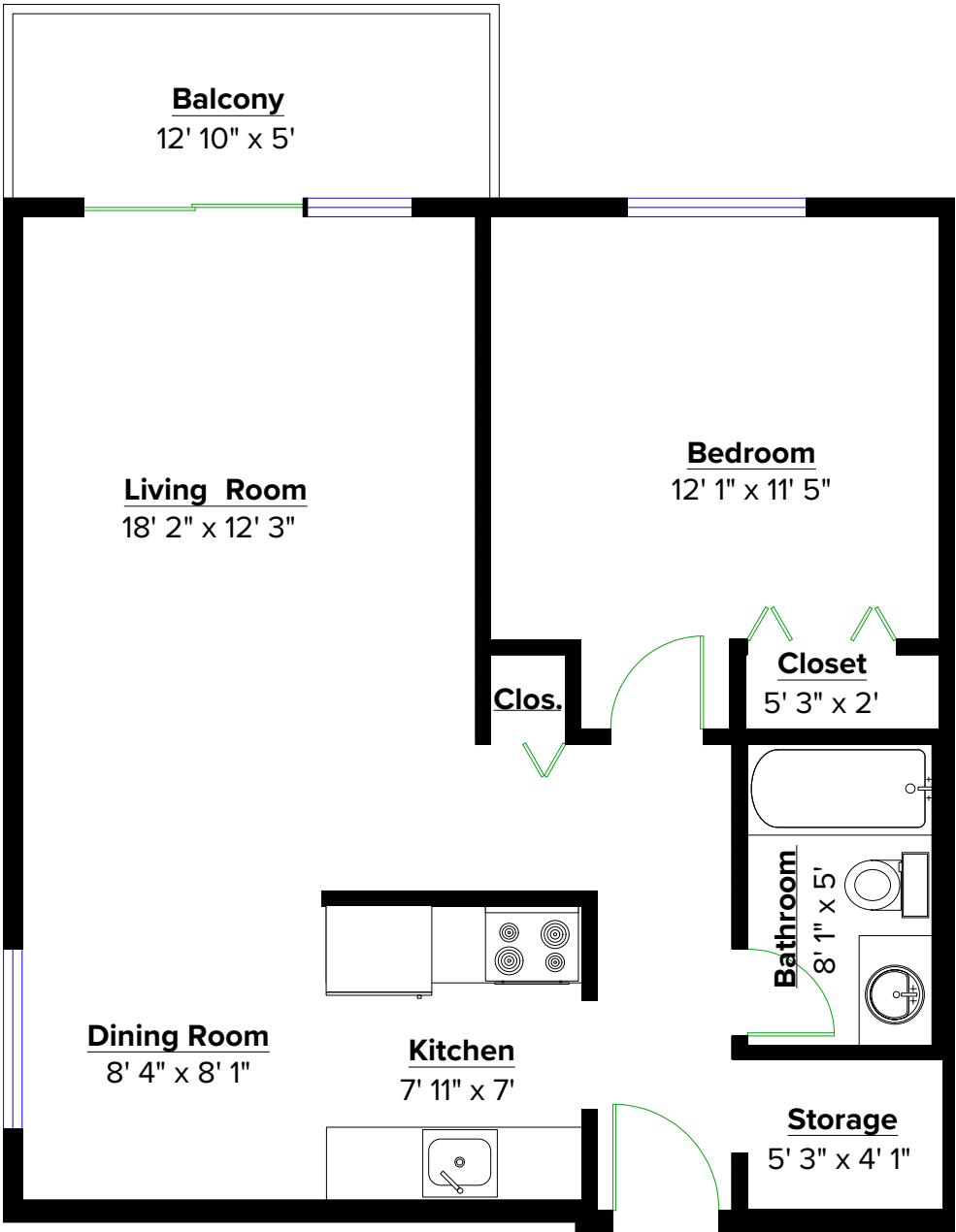
CANADIAN APARTMENT
PROPERTIES • REIT



All dimensions are approximate, and no responsibility is taken for any error, omission, or misstatement. Size and specifications to change without notice. This plan is for illustrative purposes only and should be used as such.

Suite 217

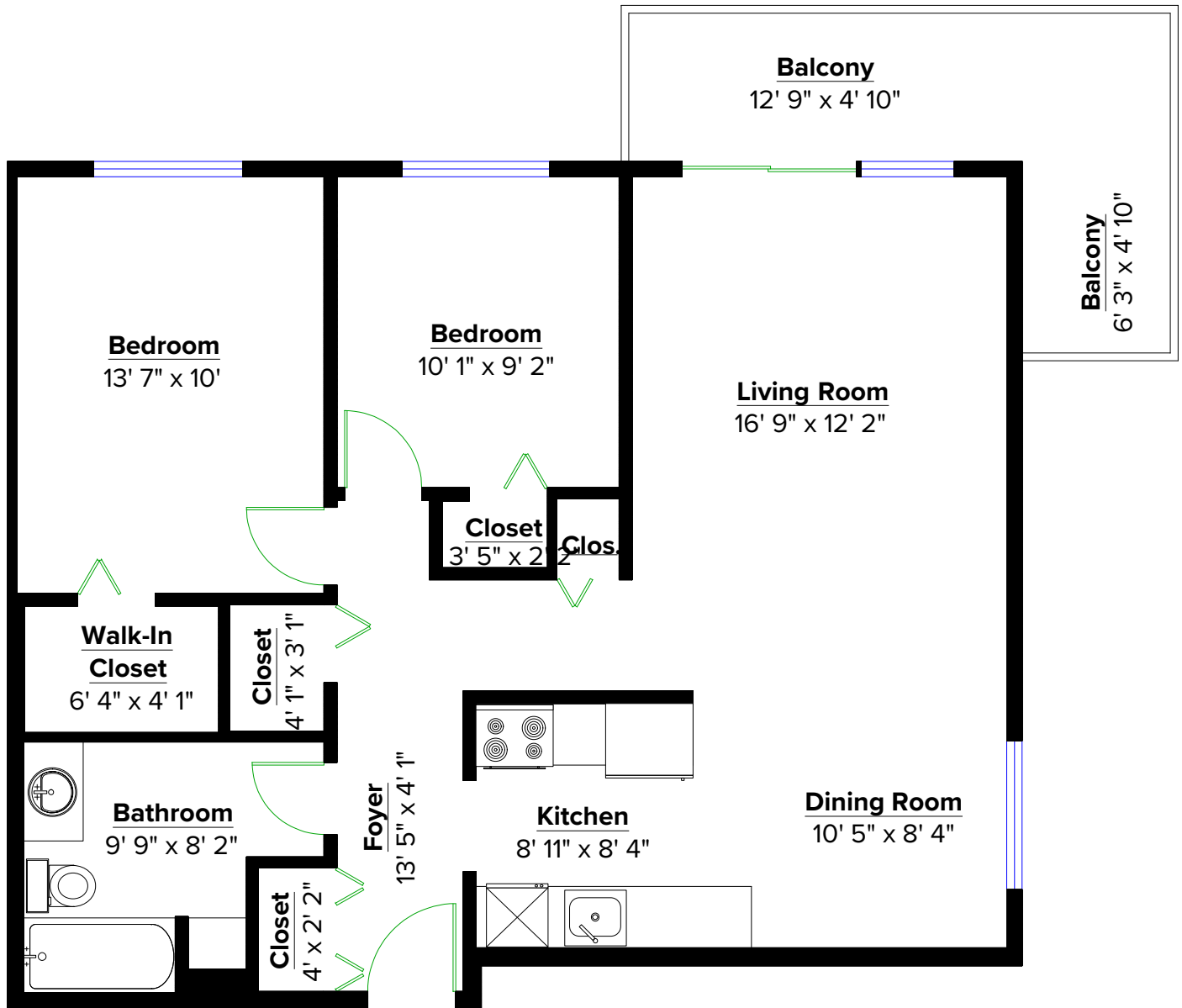
1 Bed + Den 1 Bath - 779 sq. ft.



All dimensions are approximate, and no responsibility is taken for any error, omission, or misstatement. Size and specifications to change without notice. This plan is for illustrative purposes only and should be used as such.

Suite 312

1 Bed 1 Bath - 707 sq. ft.



Suite 414

2 Bed 1 Bath - 883 sq. ft.

All dimensions are approximate, and no responsibility is taken for any error, omission, or misstatement. Size and specifications to change without notice. This plan is for illustrative purposes only and should be used as such.