

Midtown Estates Apartments

10611 - 116 St NW, Edmonton, AB, T5H 3M1



- Harmony -

1 Bedroom + 1 Bathroom
572 SQ FT



CANADIAN APARTMENT
PROPERTIES • REIT

All dimensions are approximate and no responsibility is taken for any error, omission or misstatement. Size and specifications are subject to change without notice. This plan is for illustrative purposes only and should be used as such.

Midtown Estates Apartments

10611 - 116 St NW, Edmonton, AB, T5H 3M1



- Halo -

1 Bedroom + 1 Bathroom
632 SQ FT



CANADIAN APARTMENT
PROPERTIES • REIT

All dimensions are approximate and no responsibility is taken for any error, omission or misstatement. Size and specifications are subject to change without notice. This plan is for illustrative purposes only and should be used as such.

Midtown Estates Apartments

10611 - 116 St NW, Edmonton, AB, T5H 3M1



- Coach -

**2 Bedroom + 2 Bathroom
686 SQ FT**

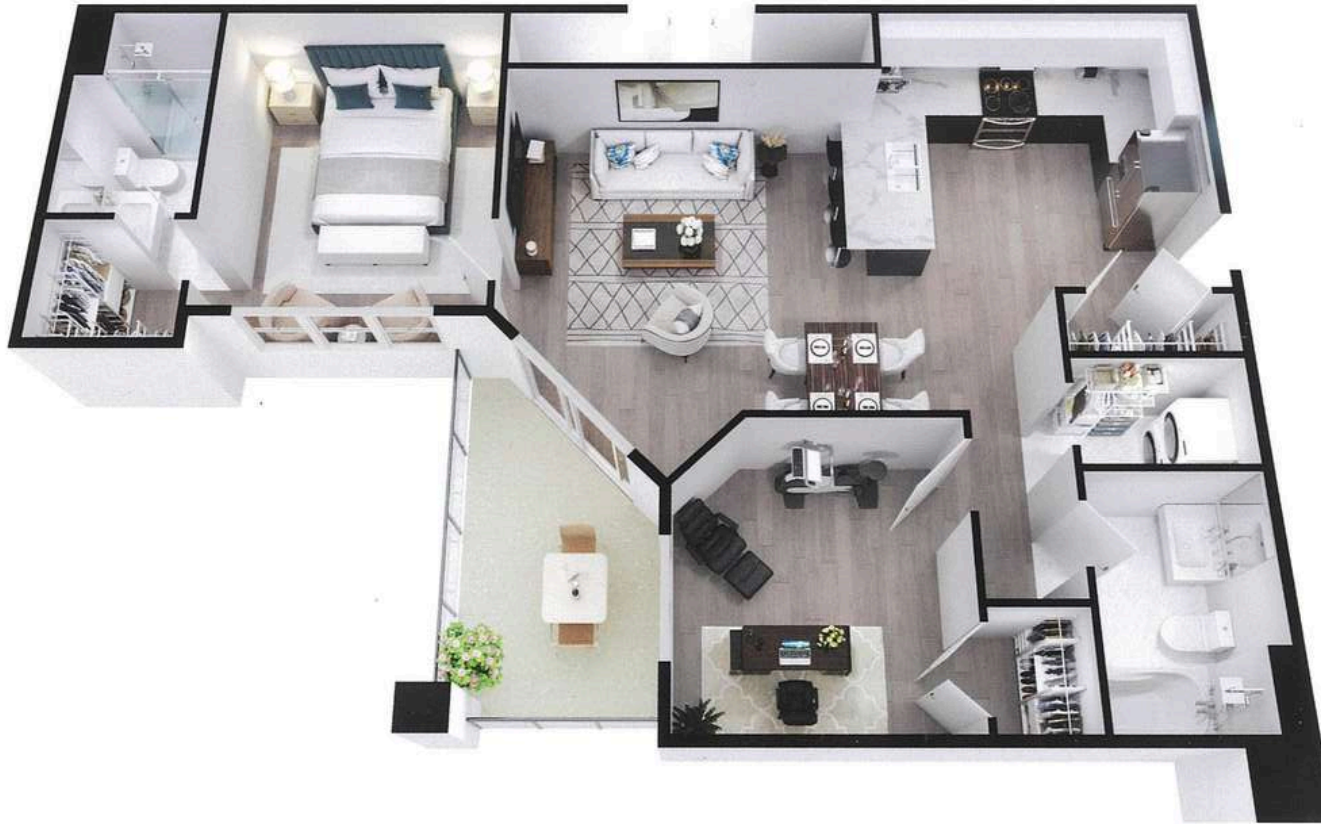


CANADIAN APARTMENT
PROPERTIES • REIT

All dimensions are approximate and no responsibility is taken for any error, omission or misstatement. Size and specifications are subject to change without notice. This plan is for illustrative purposes only and should be used as such.

Midtown Estates Apartments

10611 - 116 St NW, Edmonton, AB, T5H 3M1



- Cove -

**2 Bedroom + 2 Bathroom
808 SQ FT**



CANADIAN APARTMENT
PROPERTIES • REIT

All dimensions are approximate and no responsibility is taken for any error, omission or misstatement. Size and specifications are subject to change without notice. This plan is for illustrative purposes only and should be used as such.

Midtown Estates Apartments

10611 - 116 St NW, Edmonton, AB, T5H 3M1



- Central -

**2 Bedroom + 2 Bathroom
842 SQ FT**



CANADIAN APARTMENT
PROPERTIES • REIT

All dimensions are approximate and no responsibility is taken for any error, omission or misstatement. Size and specifications are subject to change without notice. This plan is for illustrative purposes only and should be used as such.

Midtown Estates Apartments

10611 - 116 St NW, Edmonton, AB, T5H 3M1



- Unity -

2 Bedroom + 2 Bathroom
970 SQ FT



CANADIAN APARTMENT
PROPERTIES • REIT

All dimensions are approximate and no responsibility is taken for any error, omission or misstatement. Size and specifications are subject to change without notice. This plan is for illustrative purposes only and should be used as such.

Midtown Estates Apartments

10611 - 116 St NW, Edmonton, AB, T5H 3M1



- Edge -

2 Bedroom + 2 Bathroom
1097 SQ FT

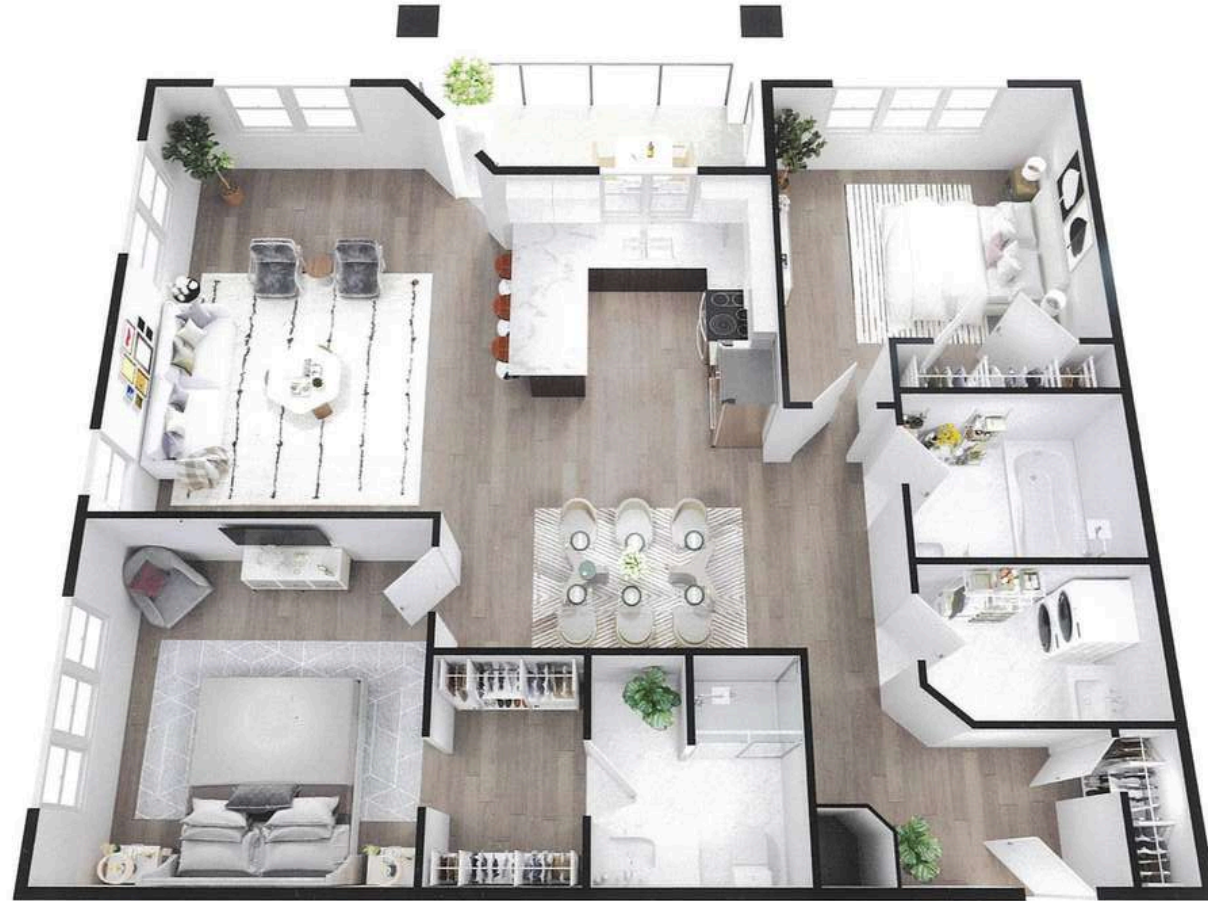


CANADIAN APARTMENT
PROPERTIES • REIT

All dimensions are approximate and no responsibility is taken for any error, omission or misstatement. Size and specifications are subject to change without notice. This plan is for illustrative purposes only and should be used as such.

Midtown Estates Apartments

10611 - 116 St NW, Edmonton, AB, T5H 3M1



- Pinnacle -

**2 Bedroom + 2 Bathroom
1099 SQ FT**



CANADIAN APARTMENT
PROPERTIES • REIT

All dimensions are approximate and no responsibility is taken for any error, omission or misstatement. Size and specifications are subject to change without notice. This plan is for illustrative purposes only and should be used as such.

Midtown Estates Apartments

10611 - 116 St NW, Edmonton, AB, T5H 3M1



- Summit -

**2 Bedroom + Loft + 3 Bathroom
1432 SQ FT**



CANADIAN APARTMENT
PROPERTIES • REIT

All dimensions are approximate and no responsibility is taken for any error, omission or misstatement. Size and specifications are subject to change without notice. This plan is for illustrative purposes only and should be used as such.

Midtown Estates Apartments

10611 - 116 St NW, Edmonton, AB, T5H 3M1



- Loft -

**2 Bedroom + Loft + 3 Bathroom
1432 SQ FT**



CANADIAN APARTMENT
PROPERTIES • REIT

All dimensions are approximate and no responsibility is taken for any error, omission or misstatement. Size and specifications are subject to change without notice. This plan is for illustrative purposes only and should be used as such.

Midtown Estates Apartments

10611 - 116 St NW, Edmonton, AB, T5H 3M1



- Executive -

**3 Bedroom + 3 Bathroom
1431 SQ FT**



CANADIAN APARTMENT
PROPERTIES • REIT

All dimensions are approximate and no responsibility is taken for any error, omission or misstatement. Size and specifications are subject to change without notice. This plan is for illustrative purposes only and should be used as such.