

6500, boulevard Décarie, Montréal QC

Type 1 (A-1)

1 CHAMBRE + 1 SALLE DE BAIN
1 BEDROOM + 1 BATHROOM

SUPERFICIE
AREA

BALCON
BALCONY

TOTALE
TOTAL

ÉTAGES
FLOORS

UNITÉS
UNITS

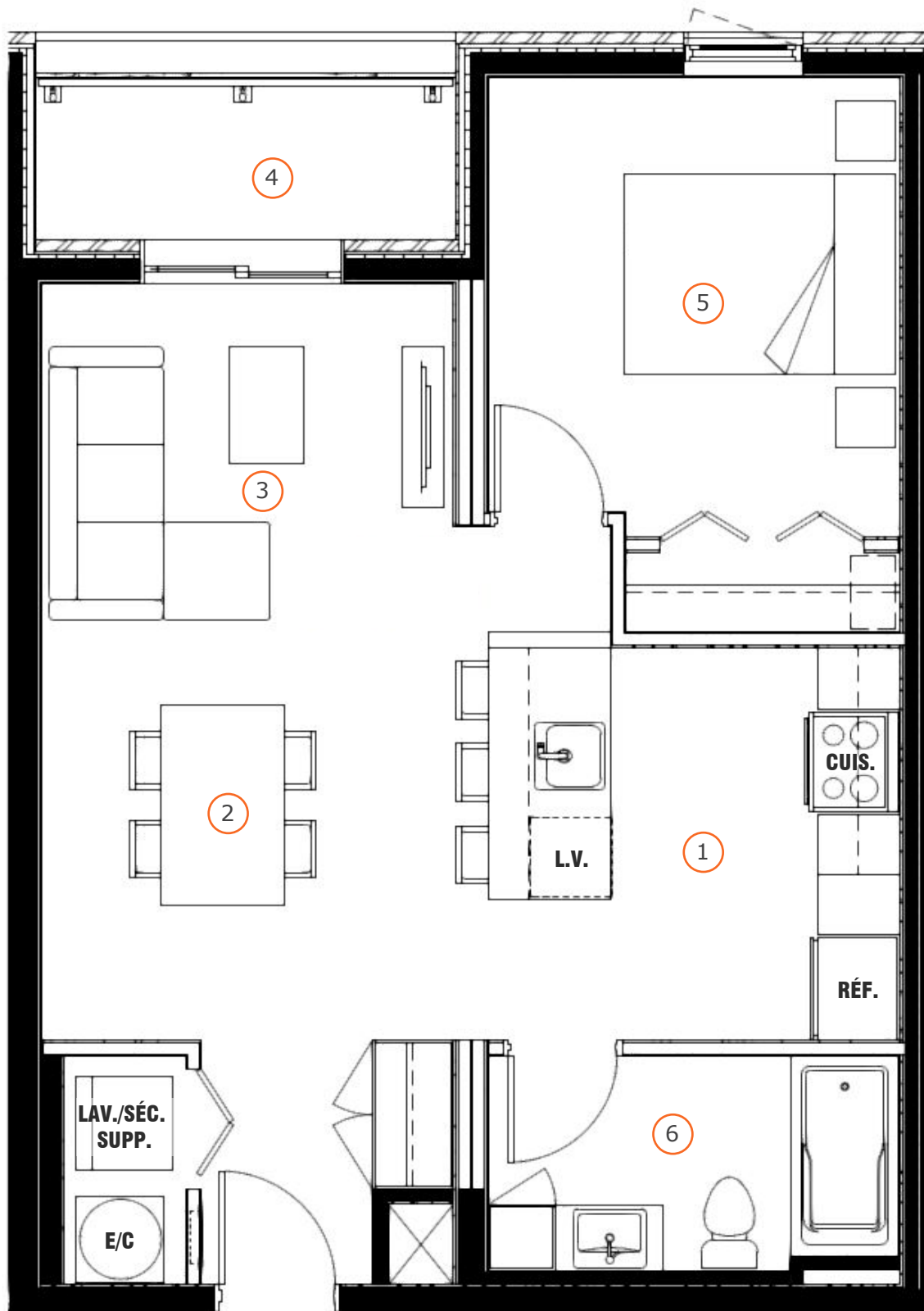
642 pi²/sq.ft. (59,6m²)

50 pi²/sq.ft. (4,6m²)

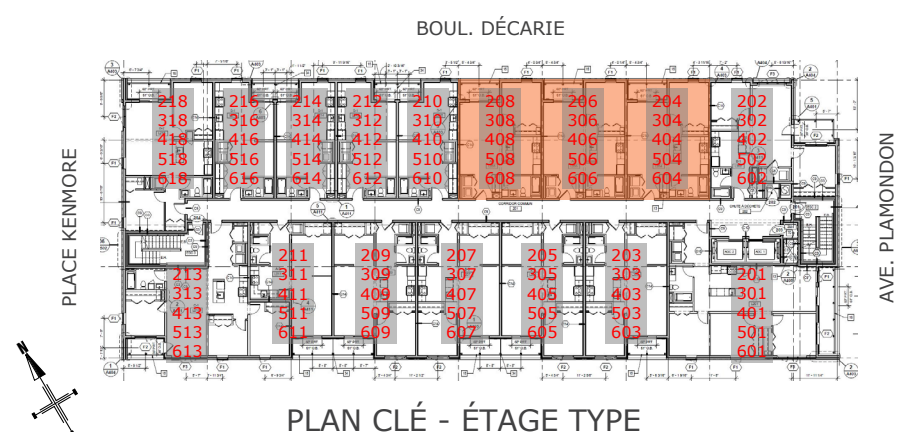
692 pi²/sq.ft. (64,2m²)

2@6

204,206,208,
304,306,308,
404,406,408,
504,506,508,
604,606,608



- ① CUISINE
KITCHEN
10'-2" x 9'-11"
- ② SALLE À MANGER
DINING ROOM
11'-0" x 8'-10"
- ③ SALON
LIVING ROOM
10'-5" x 10'-0"
- ④ BALCON
BALCONY
10'-0" x 5'-0"
- ⑤ CHAMBRE
BEDROOM
10'-2" x 11'-5"
- ⑥ SALLE DE BAIN
BATHROOM
10'-4" x 5'-6"



Le Quartz

6500, boulevard Décarie, Montréal QC

Type 2 (A-2)

1 CHAMBRE + 1 SALLE DE BAIN
1 BEDROOM + 1 BATHROOM

SUPERFICIE
AREA

BALCON
BALCONY

TOTALE
TOTAL

ÉTAGES
FLOORS

UNITÉS
UNITS

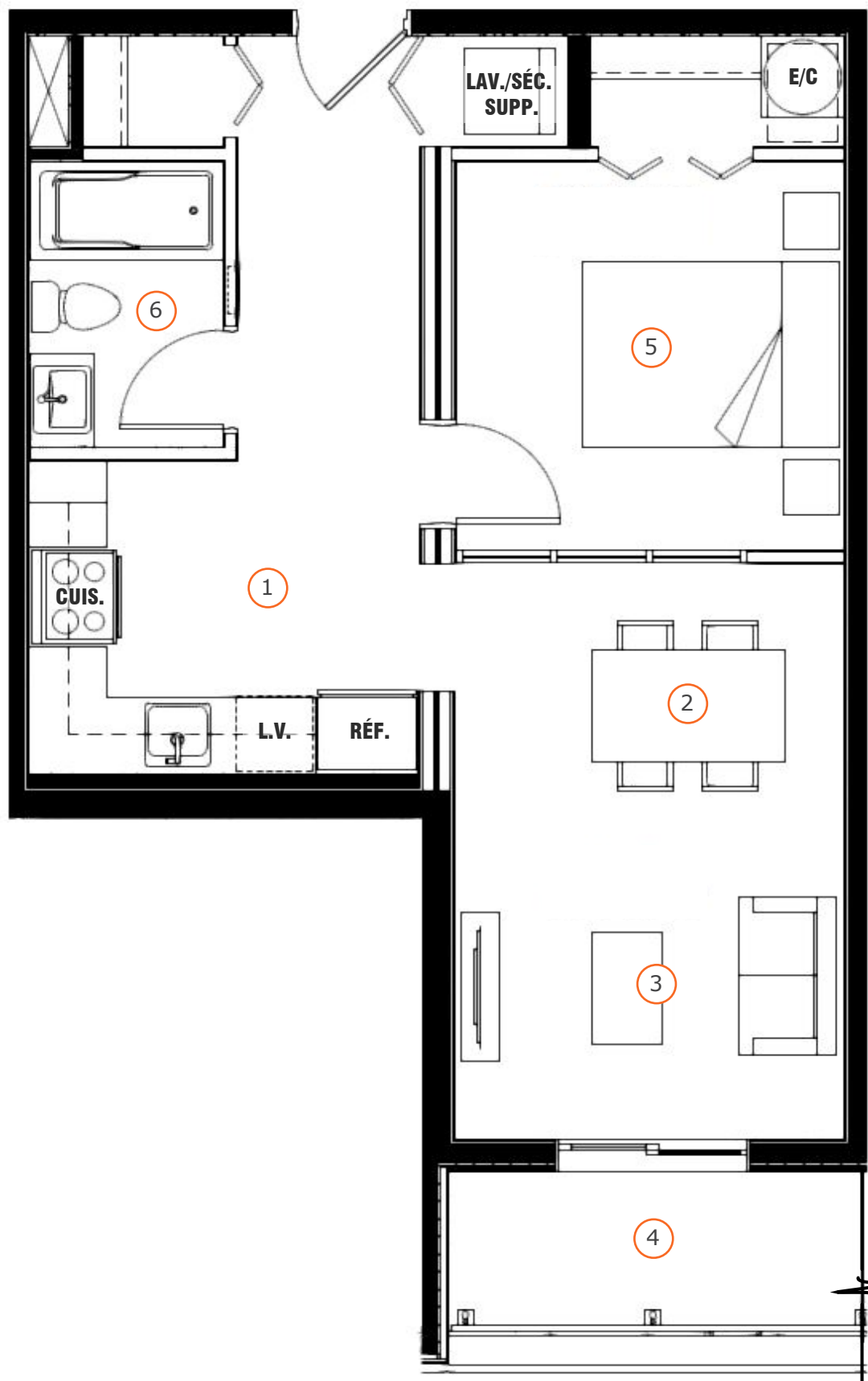
517,5 pi2/sq.ft. (48,0m²)

52,5 pi2/sq.ft. (4,8m²)

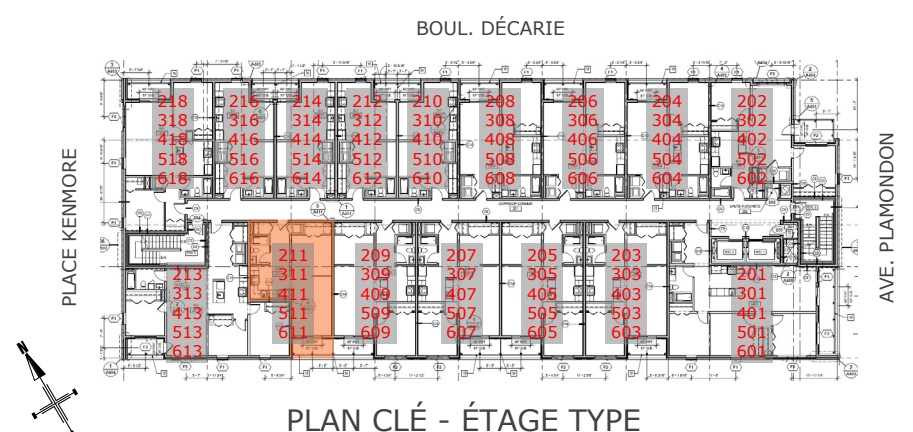
570 pi2/sq.ft. (52,9m²)

2@6

211,311,411,
511,611



- ① CUISINE
KITCHEN
10'-4" x 8'-6"
- ② SALLE À MANGER
DINING ROOM
10'-6" x 7'-6"
- ③ SALON
LIVING ROOM
10'-6" x 8'-0"
- ④ BALCON
BALCONY
10'-6" x 5'-0"
- ⑤ CHAMBRE
BEDROOM
10'-6" x 10'-6"
- ⑥ SALLE DE BAIN
BATHROOM
5'-0" x 7'-8"



PLAN CLÉ - ÉTAGE TYPE

Les dimensions et superficies sont approximatives et sujettes à des modifications sans préavis. Le mobilier montré l'est à titre indicatif seulement. Dimensions and areas are approximate and subject to change without notice. The furniture is shown as an example only.

6500, boulevard Décarie, Montréal QC

Type 3 (B-1)

2 CHAMBRES + 1 SALLE DE BAIN
2 BEDROOMS + 1 BATHROOM

SUPERFICIE
AREA

BALCON
BALCONY

TOTALE
TOTAL

ÉTAGES
FLOORS

UNITÉS
UNITS

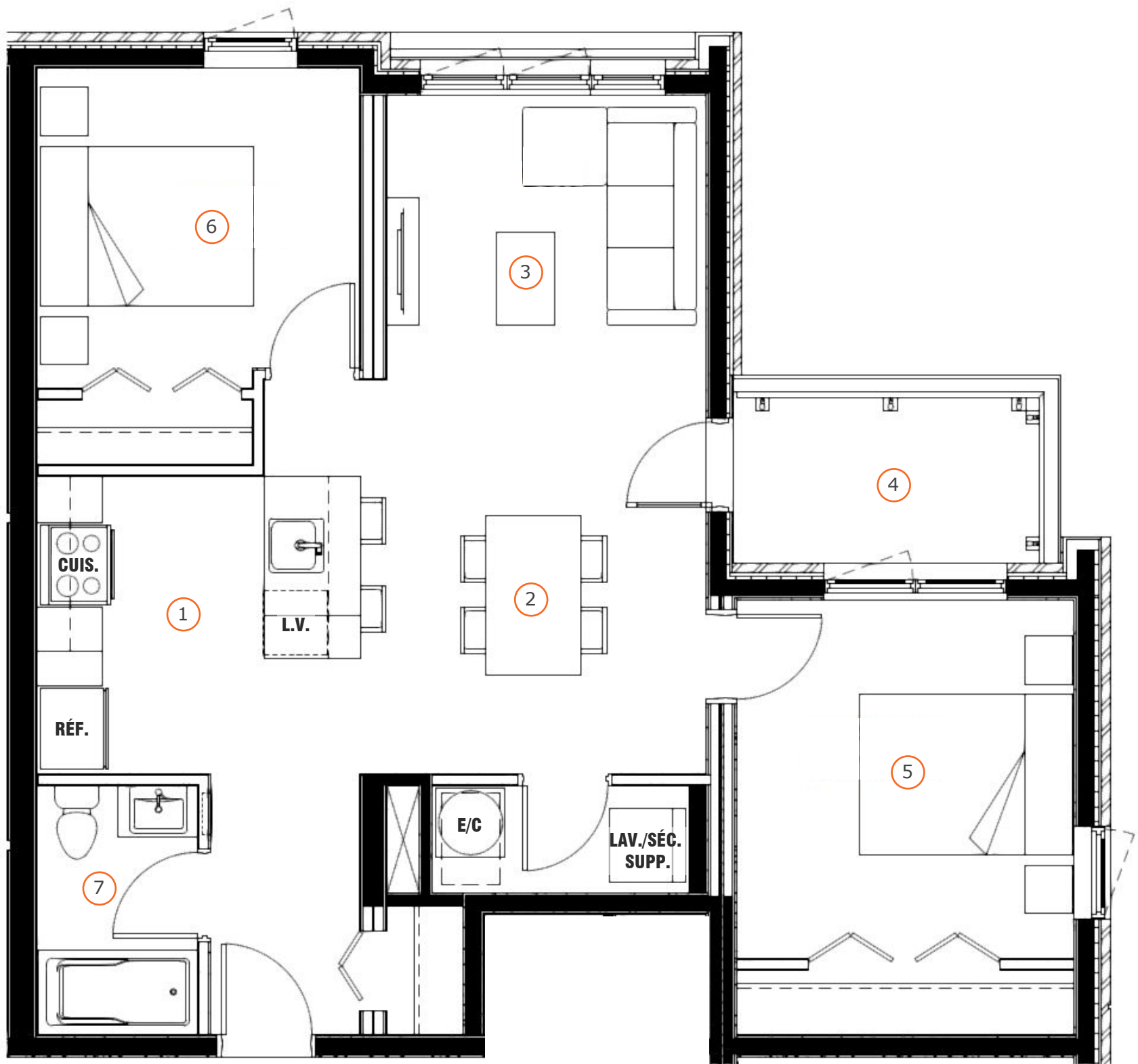
871 pi²/sq.ft. (80,9m²)

63 pi²/sq.ft. (5,8m²)

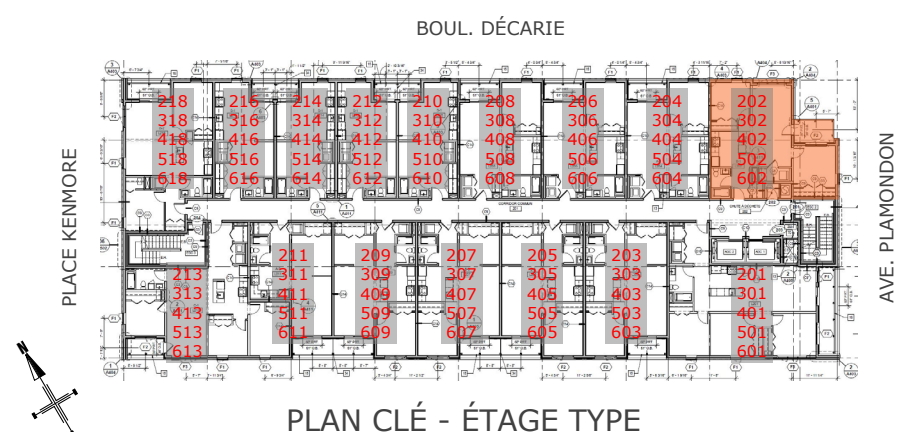
934 pi²/sq.ft. (86,7m²)

2@6

202,302,402,
502,602



- | | |
|--|---|
| ① CUISINE
KITCHEN
10'-4" x 9'-3" | ⑤ CHAMBRE
BEDROOM
11'-0" x 10'-10" |
| ② SALLE À MANGER
DINING ROOM
10'-2" x 9'-10" | ⑥ CHAMBRE 2
BEDROOM 2
10'-4" x 10'-0" |
| ③ SALON
LIVING ROOM
10'-2" x 11'-6" | ⑦ SALLE DE BAIN
BATHROOM
5'-0" x 7'-10" |
| ④ BALCON
BALCONY
10'-6" x 6'-0" | |



Les dimensions et superficies sont approximatives et sujettes à des modifications sans préavis. Le mobilier montré l'est à titre indicatif seulement. *Dimensions and areas are approximate and subject to change without notice. The furniture is shown as an example only.*

Le Quartz

6500, boulevard Décarie, Montréal QC

Type 4 (B-2)

2 CHAMBRES + 1 SALLE DE BAIN
2 BEDROOMS + 1 BATHROOM

SUPERFICIE
AREA

BALCON
BALCONY

TOTALE
TOTAL

ÉTAGES
FLOORS

UNITÉS
UNITS

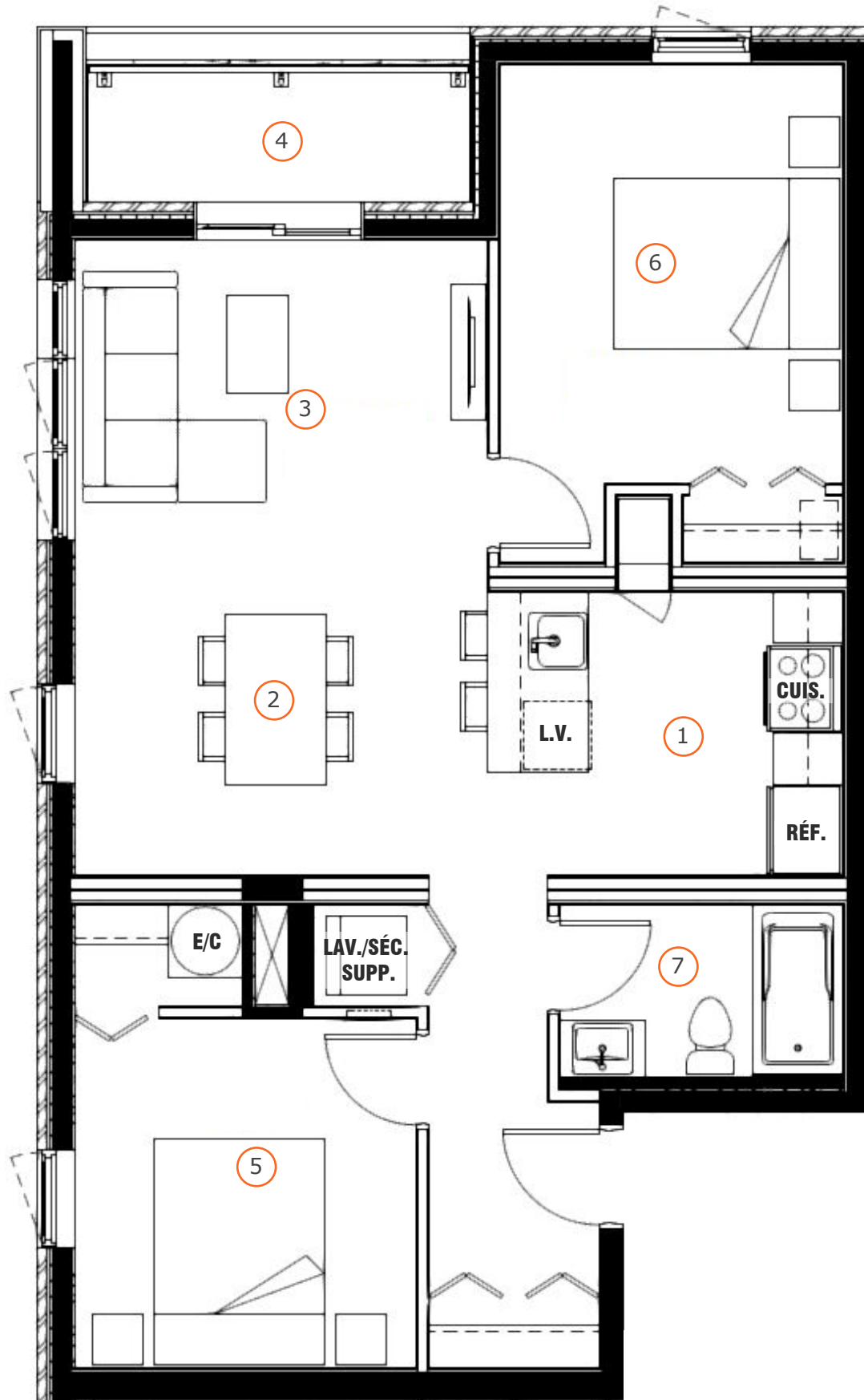
850 pi²/sq.ft. (78,9m²)

55 pi²/sq.ft. (5,1m²)

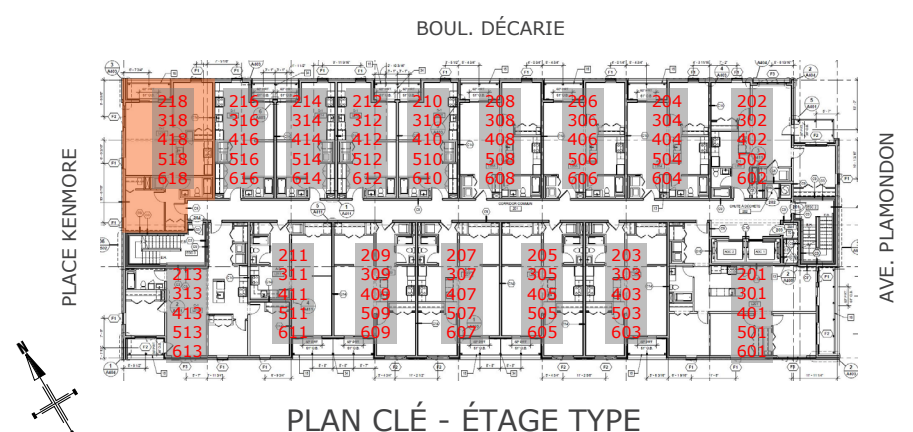
905 pi²/sq.ft. (84,0m²)

2@6

218,318,418,
518,618



- ① CUISINE
KITCHEN
10'-6" x 9'-0"
- ② SALLE À MANGER
DINING ROOM
12'-4" x 9'-0"
- ③ SALON
LIVING ROOM
12'-4" x 10'-0"
- ④ BALCON
BALCONY
11'-0" x 5'-0"
- ⑤ CHAMBRE
BEDROOM
10'-2" x 10'-8"
- ⑥ CHAMBRE 2
BEDROOM 2
10'-2" x 12'-6"
- ⑦ SALLE DE BAIN
BATHROOM
8'-6" x 5'-0"



Les dimensions et superficies sont approximatives et sujettes à des modifications sans préavis. Le mobilier montré l'est à titre indicatif seulement. Dimensions and areas are approximate and subject to change without notice. The furniture is shown as an example only.

6500, boulevard Décarie, Montréal QC

Type 5 (B-3)

2 CHAMBRES + 1 SALLE DE BAIN
2 BEDROOMS + 1 BATHROOM

SUPERFICIE
AREA

BALCON
BALCONY

TOTALE
TOTAL

ÉTAGES
FLOORS

UNITÉS
UNITS

737 pi2/sq.ft. (68,4m²)

52,5 pi2/sq.ft. (4,8m²)

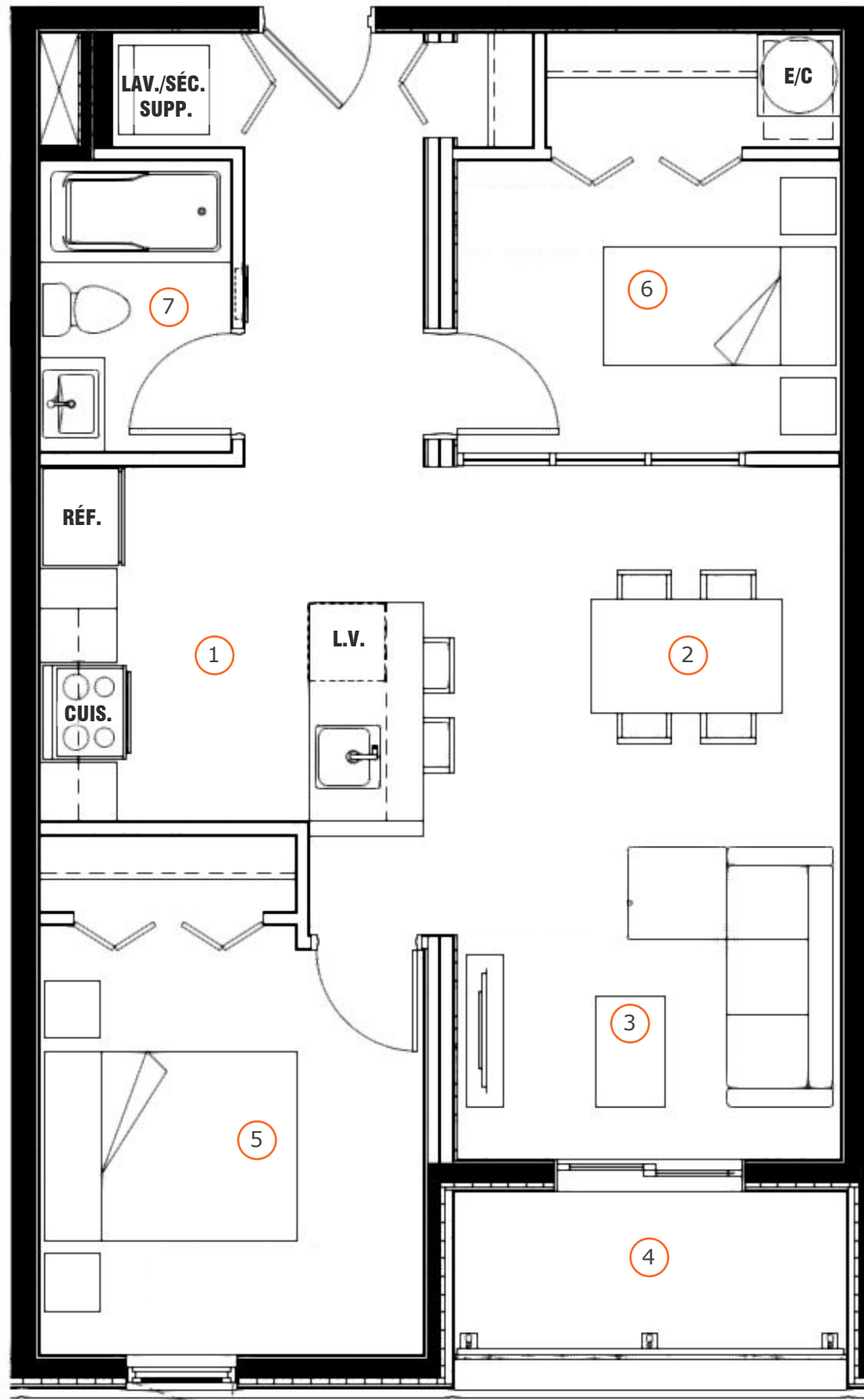
789,5 pi2/sq.ft. (73,3m²)

2@6

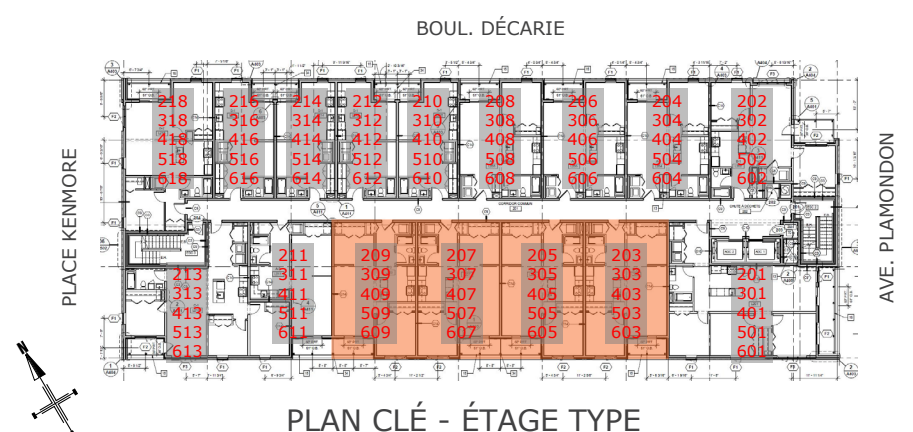
203,207,303,307,
403,407,503,507
603,607

VERSION MIRROIR

205,209,305,309,
405,409,505,509
605,609



- | | |
|---|--|
| ① CUISINE
KITCHEN
10'-4" x 9'-3" | ⑤ CHAMBRE
BEDROOM
10'-4" x 11'-4" |
| ② SALLE À MANGER
DINING ROOM
10'-6" x 8'-5" | ⑥ CHAMBRE 2
BEDROOM 2
10'-4" x 7'-8" |
| ③ SALON
LIVING ROOM
10'-6" x 9'-10" | ⑦ SALLE DE BAIN
BATHROOM
5'-0" x 7'-8" |
| ④ BALCON
BALCONY
10'-6" x 5'-0" | |



PLAN CLÉ - ÉTAGE TYPE

Le Quartz

6500, boulevard Décarie, Montréal QC

Type 6 (C-1)

3 CHAMBRES + 1 SALLE DE BAIN
3 BEDROOMS + 1 BATHROOM

SUPERFICIE
AREA

BALCON
BALCONY

TOTALE
TOTAL

ÉTAGES
FLOORS

UNITÉS
UNITS

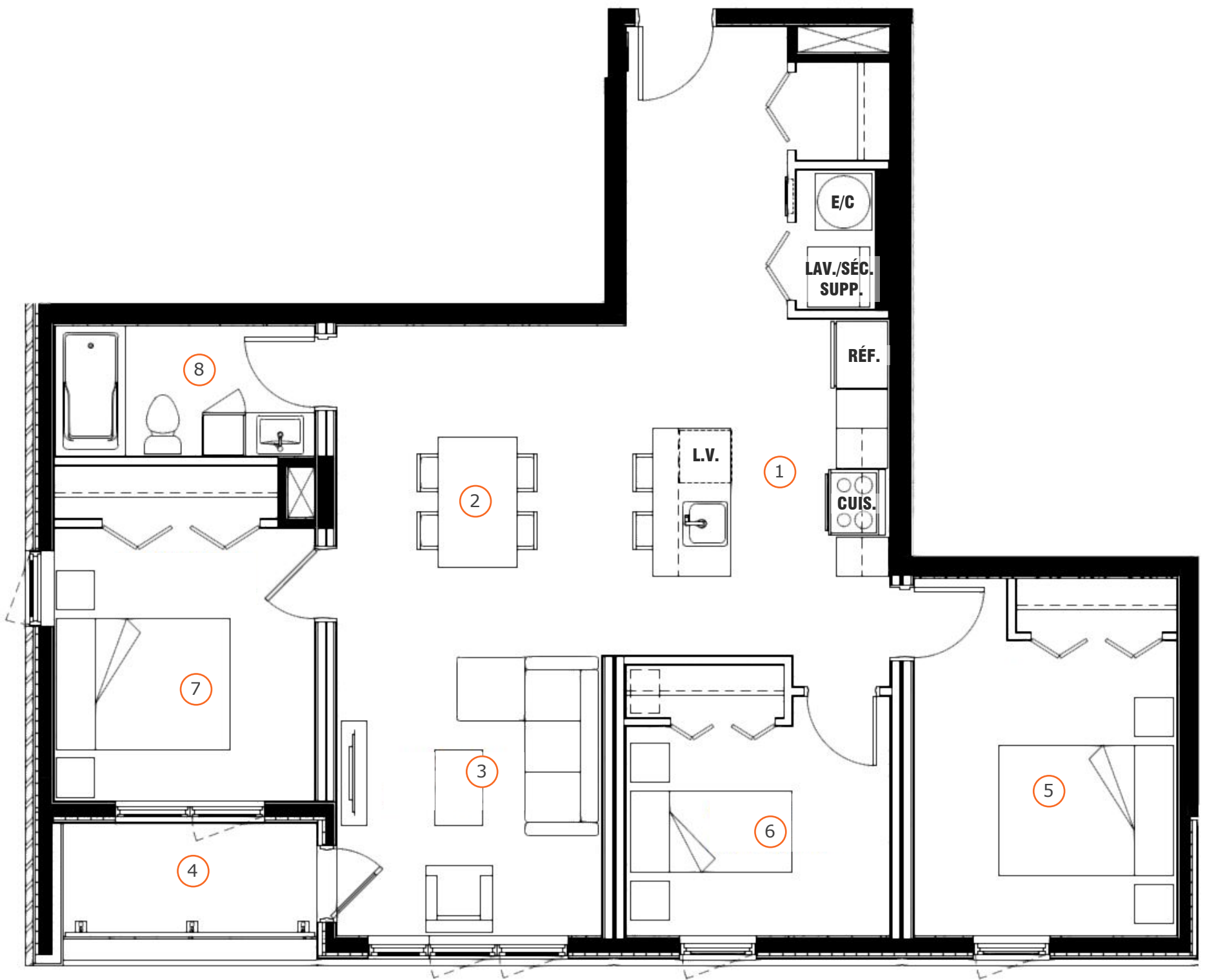
1047 pi2/sq.ft. (97,2m²)

47,5 pi2/sq.ft. (4,4m²)

1094,5 pi2/sq.ft. (101,6m²)

2@6

213,313,413,
513,613



- | | |
|---|--|
| ① CUISINE
KITCHEN
10'-10" x 9'-10" | ⑤ CHAMBRE
BEDROOM
10'-4" x 11'-6" |
| ② SALLE À MANGER
DINING ROOM
10'-4" x 10'-10" | ⑥ CHAMBRE 2
BEDROOM 2
10'-4" x 8'-0" |
| ③ SALON
LIVING ROOM
10'-4" x 12'-0" | ⑦ CHAMBRE 3
BEDROOM 3
10'-2" x 9'-0" |
| ④ BALCON
BALCONY
9'-6" x 5'-0" | ⑧ SALLE DE BAIN
BATHROOM
6'-2" x 9'-9" |



PLAN CLÉ - ÉTAGE TYPE

Les dimensions et superficies sont approximatives et sujettes à des modifications sans préavis. Le mobilier montré l'est à titre indicatif seulement. Dimensions and areas are approximate and subject to change without notice. The furniture is shown as an example only.

6500, boulevard Décarie, Montréal QC

Type 7 (C-2)

3 CHAMBRES + 1 SALLE DE BAIN
3 BEDROOMS + 1 BATHROOM

SUPERFICIE
AREA

BALCON
BALCONY

TOTALE
TOTAL

ÉTAGES
FLOORS

UNITÉS
UNITS

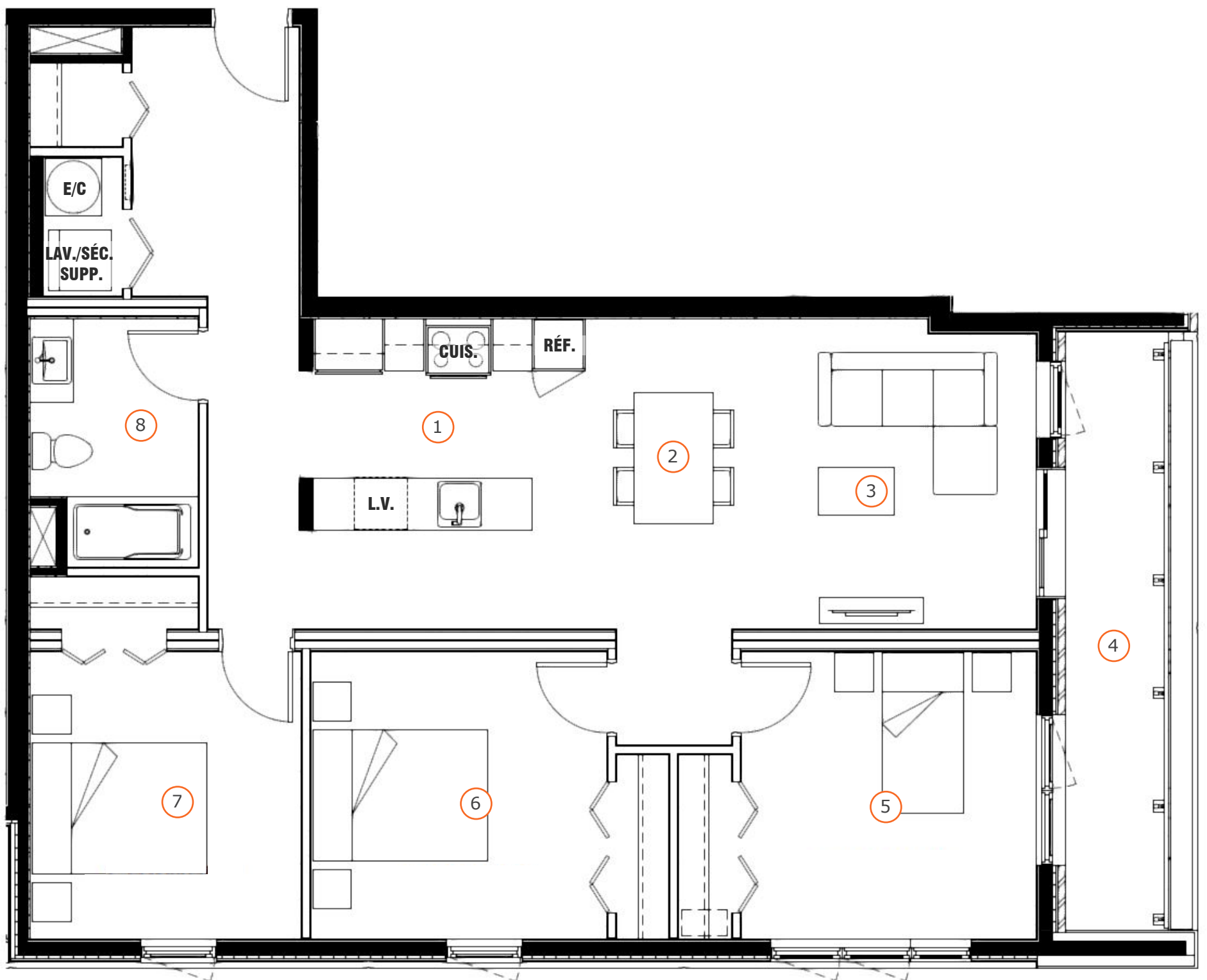
1122 pi2/sq.ft. (104,2m²)

103,5 pi2/sq.ft. (9,6m²)

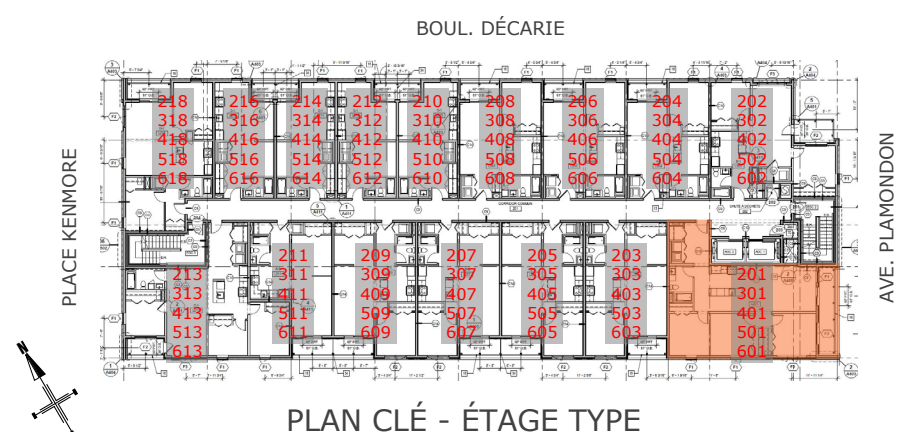
1225,5 pi2/sq.ft. (113,8m²)

2@6

201,301,401,
501,601



- | | |
|---|--|
| ① CUISINE
KITCHEN
11'-0" x 12'-0" | ⑤ CHAMBRE
BEDROOM
11'-4" x 11'-0" |
| ② SALLE À MANGER
DINING ROOM
7'-1" x 12'-0" | ⑥ CHAMBRE 2
BEDROOM 2
11'-4" x 11'-0" |
| ③ SALON
LIVING ROOM
10'-0" x 12'-0" | ⑦ CHAMBRE 3
BEDROOM 3
10'-6" x 11'-0" |
| ④ BALCON
BALCONY
4'-6" x 23'-0" | ⑧ SALLE DE BAIN
BATHROOM
6'-2" x 9'-9" |



Les dimensions et superficies sont approximatives et sujettes à des modifications sans préavis. Le mobilier montré l'est à titre indicatif seulement. *Dimensions and areas are approximate and subject to change without notice. The furniture is shown as an example only.*

Le Quartz

6500, boulevard Décarie, Montréal QC

Type 8 (S-1)

1 CHAMBRE (STUDIO) + 1 SALLE DE BAIN
1 BEDROOM (LOFT) + 1 BATHROOM

SUPERFICIE
AREA

BALCON
BALCONY

TOTALE
TOTAL

ÉTAGES
FLOORS

UNITÉS
UNITS

477 pi²/sq.ft. (44,3m²)

30 pi²/sq.ft. (2,7m²)

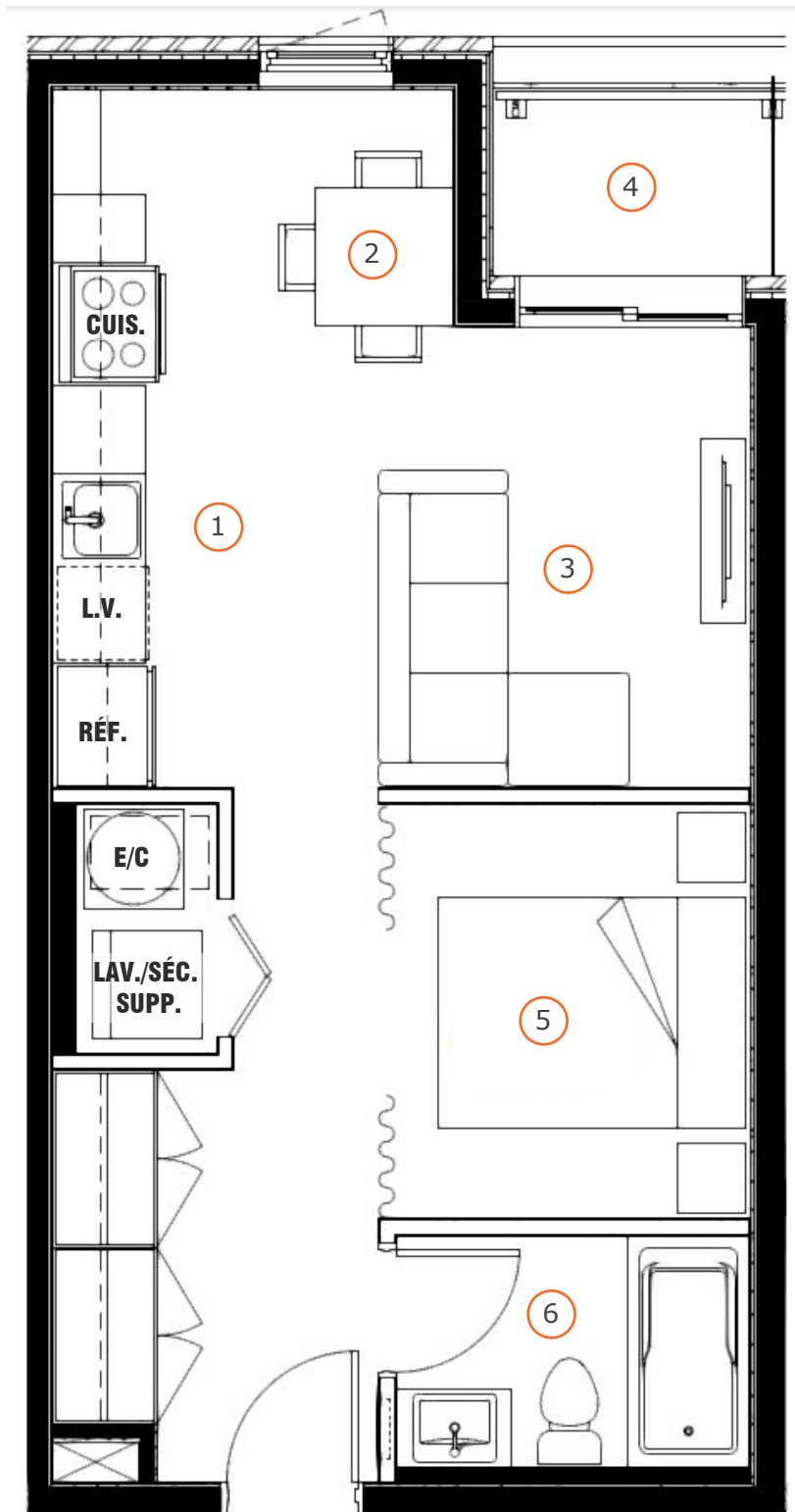
507 pi²/sq.ft. (47,1m²)

2@6

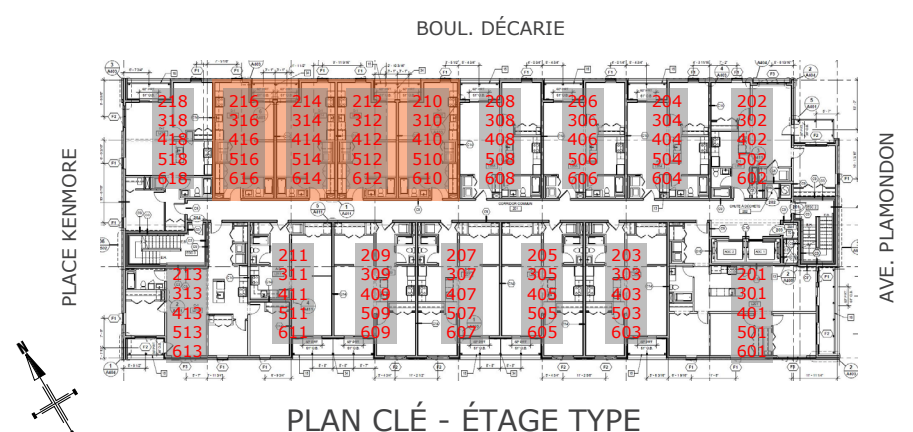
212,216,312,316,
412,416,512,516
612,616

VERSION MIRROIR

210,214,310,314,
410,414,510,514
610,614



- ① CUISINE
KITCHEN
8'-10" x 15'-0"
- ② SALLE À MANGER
DINING ROOM
8'-10" x 6'-0"
- ③ SALON
LIVING ROOM
8'-0" x 9'-10"
- ④ BALCON
BALCONY
6'-0" x 5'-0"
- ⑤ CHAMBRE
BEDROOM
8'-0" x 9'-0"
- ⑥ SALLE DE BAIN
BATHROOM
8'-0" x 5'-0"



PLAN CLÉ - ÉTAGE TYPE

Les dimensions et superficies sont approximatives et sujettes à des modifications sans préavis. Le mobilier montré l'est à titre indicatif seulement. *Dimensions and areas are approximate and subject to change without notice. The furniture is shown as an example only.*