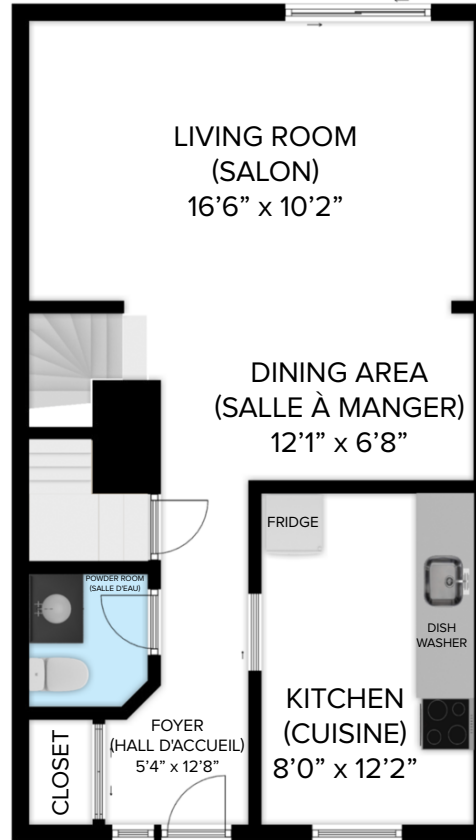


Hunter's Point Townhomes

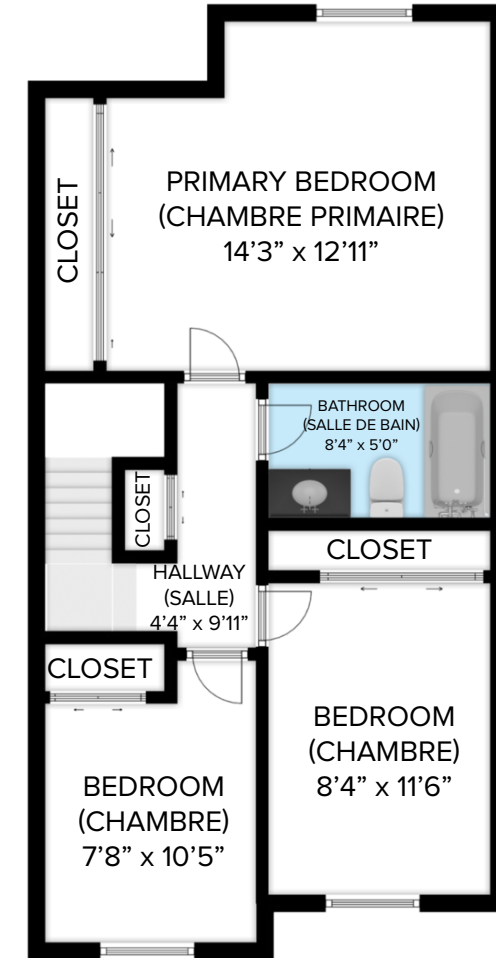
2480-2628 Hunter's Point Crescent,
Ottawa



BASEMENT (UNFINISHED)
(SOUS-SOL)
531 pi² (sq.ft)



MAIN LEVEL
(NIVEAU PRINCIPAL)
566 pi² (sq.ft)



UPPER LEVEL
(NIVEAU SUPÉRIEUR)
615 pi² (SQ.FT)

3 Bedroom | 5½ | 1,712 sq.ft (pi²)

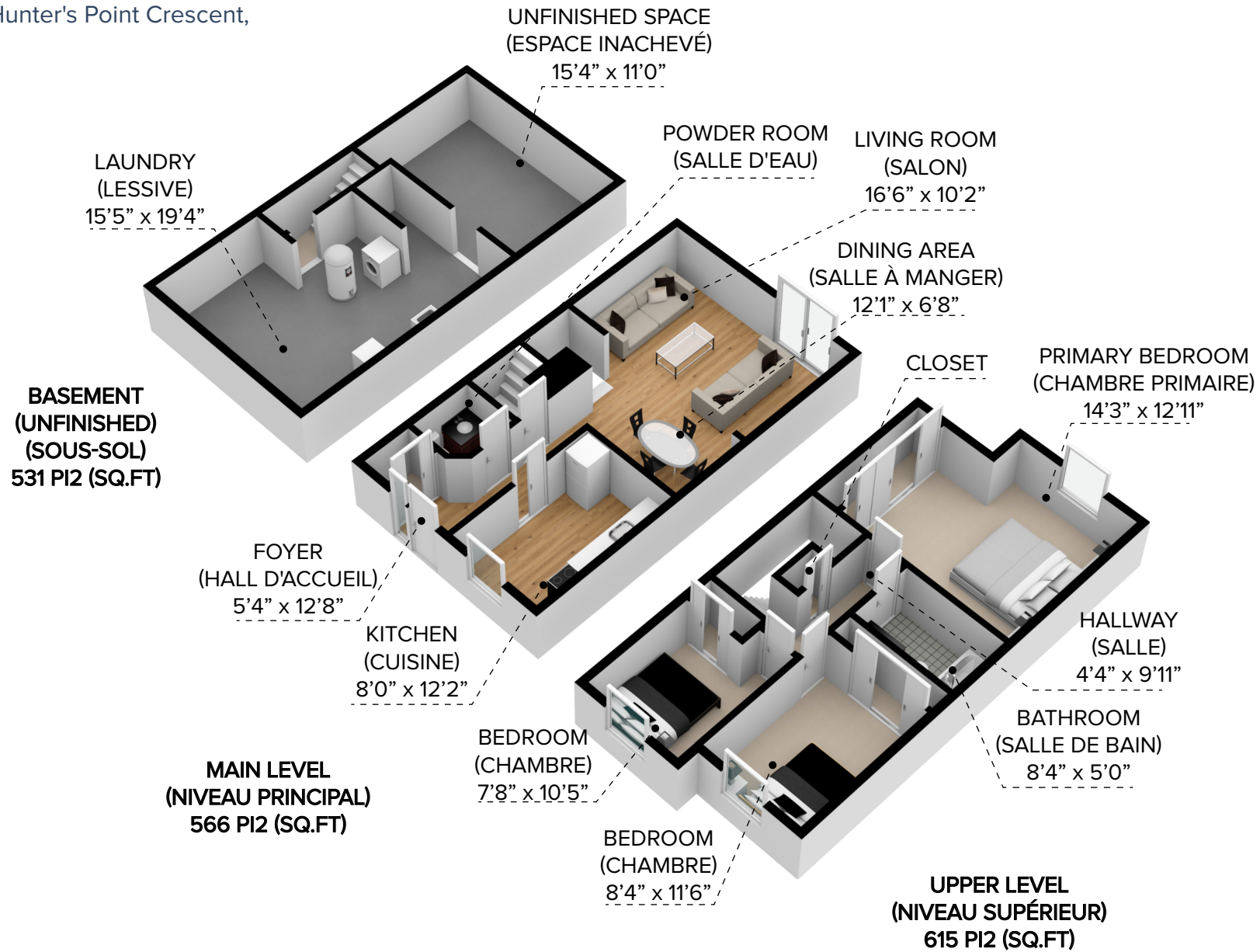
All dimensions are approximate and no responsibility is taken for any error, omission or misstatement. Size and specifications are subject to change without notice. This plan is for illustrative purposes only and should be used as such.



CANADIAN APARTMENT
PROPERTIES • REIT

Hunter's Point Townhomes

2480-2628 Hunter's Point Crescent,
Ottawa



All dimensions are approximate and no responsibility is taken for any error, omission or misstatement. Size and specifications are subject to change without notice. This plan is for illustrative purposes only and should be used as such.



CANADIAN APARTMENT
PROPERTIES • REIT

3 Bedroom | 5½ | 1,712 sq.ft (pi²)