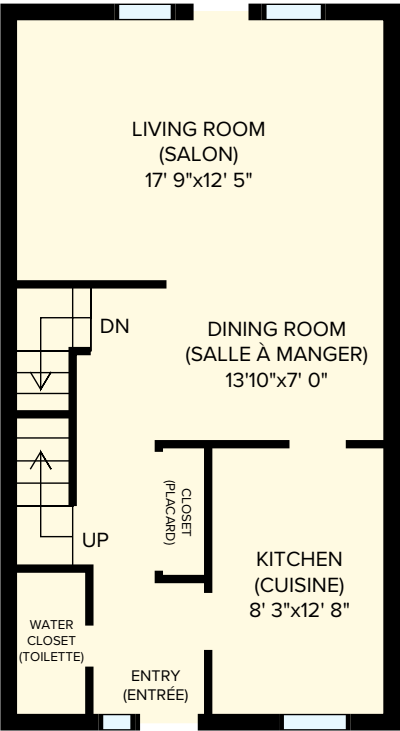
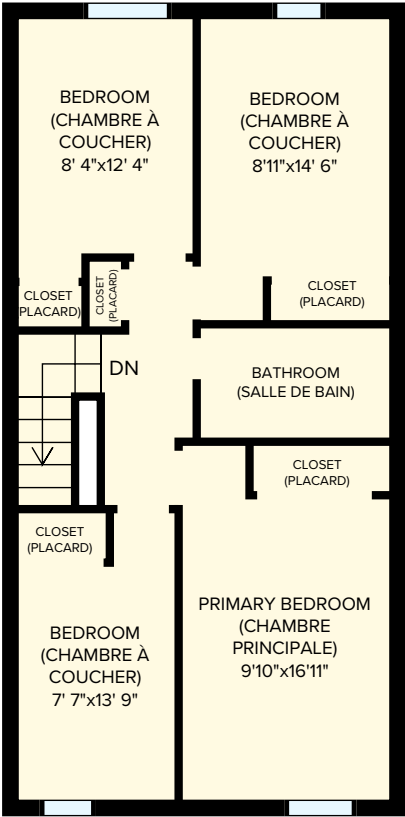


Beaconwood Village Townhomes

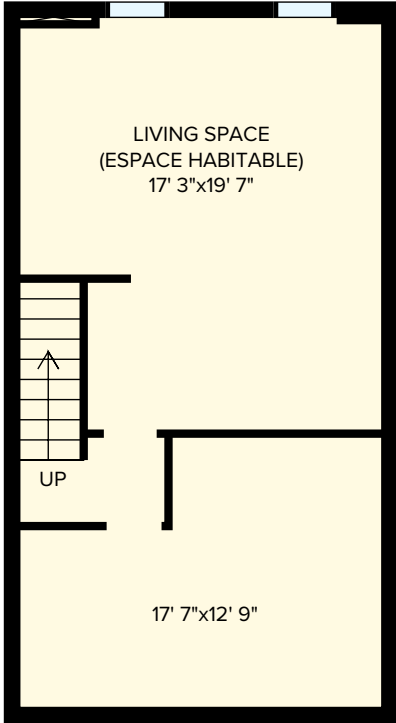
1992 Beaconwood Drive, Ottawa, ON, K1J 8L6



Main Floor



2nd Floor



Basement

4 Bedroom (6 1/2)

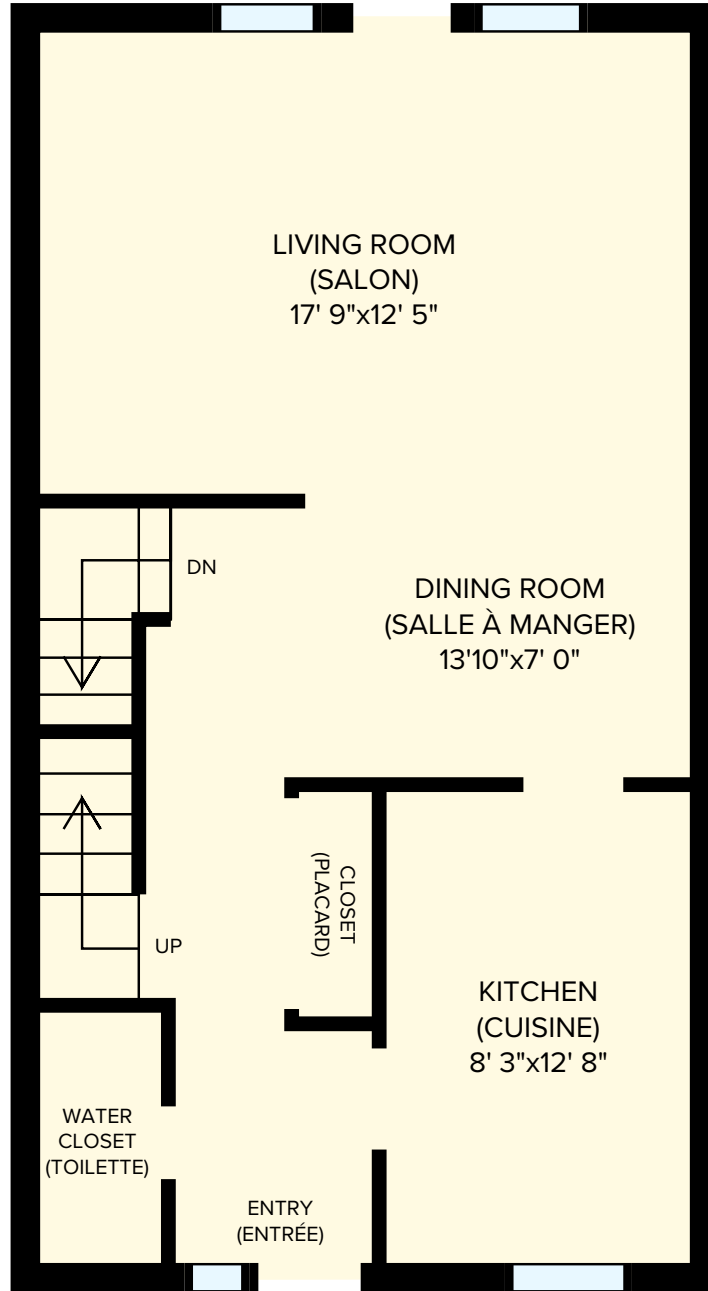


CANADIAN APARTMENT
PROPERTIES • REIT

All dimensions are approximate, and no responsibility is taken for any error, omission, or misstatement. Size and specifications are subject to change without notice. This plan is for illustrative purposes only and should be used as such. Toutes les dimensions sont approximatives. Les grandeurs et les spécifications sont modifiables sans préavis. Toutes les illustrations sont des vues d'artiste. L'espace utilisable des planchers peut varier légèrement des aires de plancher stipulées.

Beaconwood Village Townhomes

1992 Beaconwood Drive, Ottawa, ON, K1J 8L6



Main Floor 592 sq. ft (pi²)

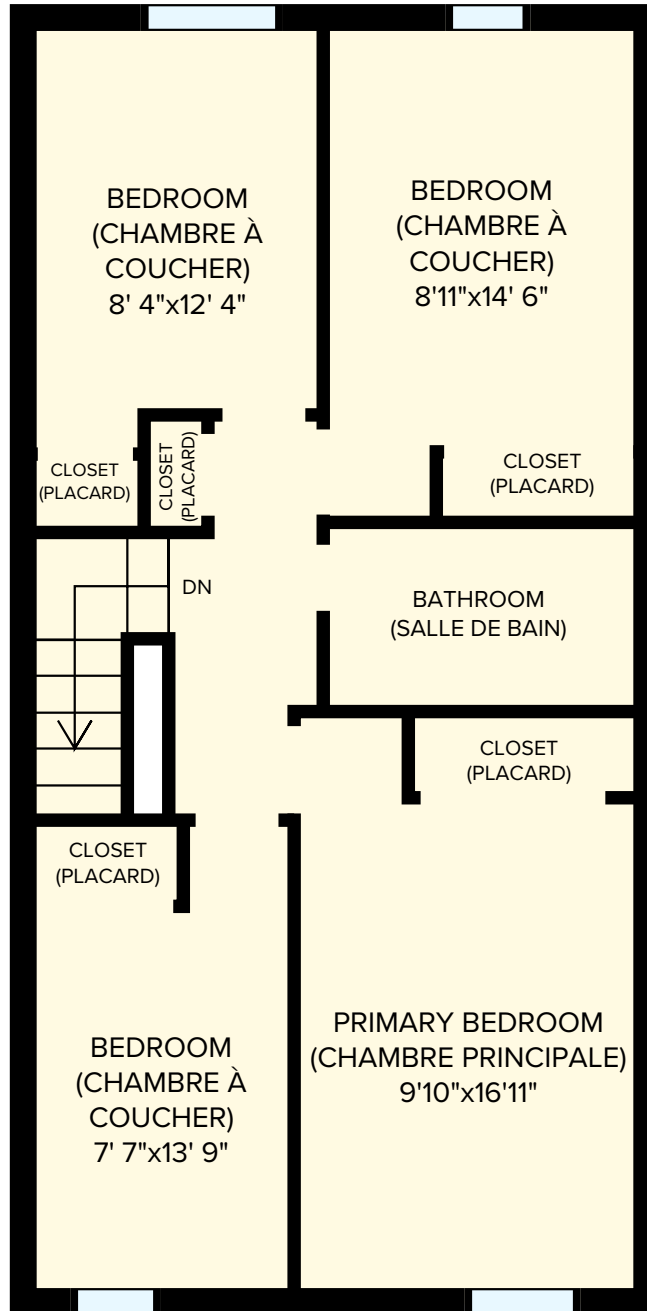
All dimensions are approximate, and no responsibility is taken for any error, omission, or misstatement. Size and specifications are subject to change without notice. This plan is for illustrative purposes only and should be used as such. Toutes les dimensions sont approximatives. Les grandeurs et les spécifications sont modifiables sans préavis. Toutes les illustrations sont des vues d'artiste. L'espace utile véritable des planchers peut varier légèrement des aires de plancher stipulées.



CANADIAN APARTMENT
PROPERTIES • REIT

Beaconwood Village Townhomes

1992 Beaconwood Drive, Ottawa, ON, K1J 8L6



Second Floor 666 sq. ft (pi²)

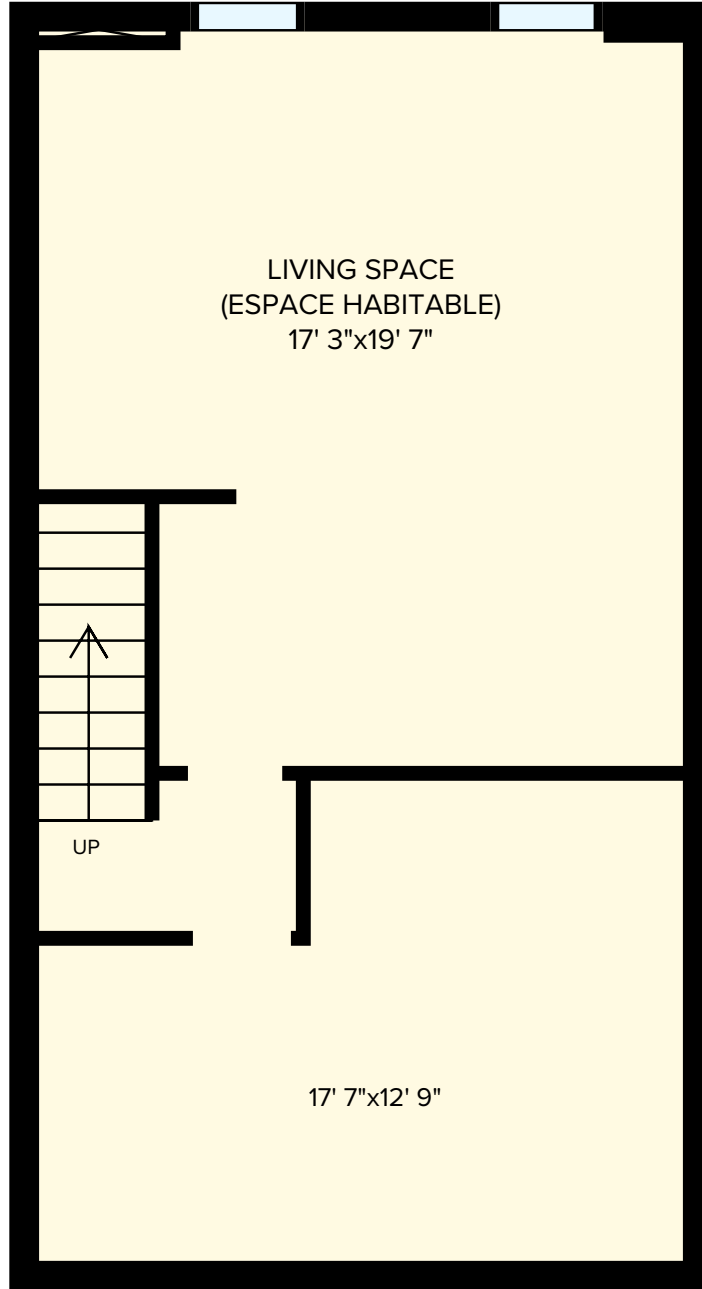
All dimensions are approximate, and no responsibility is taken for any error, omission, or misstatement. Size and specifications are subject to change without notice. This plan is for illustrative purposes only and should be used as such. Toutes les dimensions sont approximatives. Les grandeurs et les spécifications sont modifiables sans préavis. Toutes les illustrations sont des vues d'artiste. L'espace utile véritable des planchers peut varier légèrement des aires de plancher stipulées.



CANADIAN APARTMENT
PROPERTIES • REIT

Beaconwood Village Townhomes

1992 Beaconwood Drive, Ottawa, ON, K1J 8L6



All dimensions are approximate, and no responsibility is taken for any error, omission, or misstatement. Size and specifications are subject to change without notice. This plan is for illustrative purposes only and should be used as such. Toutes les dimensions sont approximatives. Les grandeurs et les spécifications sont modifiables sans préavis. Toutes les illustrations sont des vues d'artiste. L'espace utile véritable des planchers peut varier légèrement des aires de plancher stipulées.

Basement 580 sq. ft (pi²)



CANADIAN APARTMENT
PROPERTIES • REIT