



## 44 Stubbs Dr, North York - Bachelor, 370sf

All dimensions are approximate. Sizes and specifications are subject to change without notice E. & O. E. All illustrations are artist's concept. Actual usable floor space may vary slightly from stated floor area.



## 44 Stubbs Dr, North York - 1 Bdrm A

All dimensions are approximate. Sizes and specifications are subject to change without notice E. & O. E. All illustrations are artist's concept. Actual usable floor space may vary slightly from stated floor area.



## 44 Stubbs Dr, North York - 1 Bdrm B, 370sf

All dimensions are approximate. Sizes and specifications are subject to change without notice E. & G. E.  
All illustrations are artist's concept. Actual usable floor space may vary slightly from stated floor area.



## 44 Stubbs Dr, North York - 2 Bdrm, 990sf

All dimensions are approximate. Sizes and specifications are subject to change without notice E. & O. E.  
All illustrations are artist's concept. Actual usable floor space may vary slightly from stated floor area.



## 44 Stubbs Dr, North York - 2 Bdrm, 990 sf

All dimensions are approximate. Sizes and specifications are subject to change without notice E. & O. E.  
All illustrations are artist's concept. Actual usable floor space may vary slightly from stated floor area.



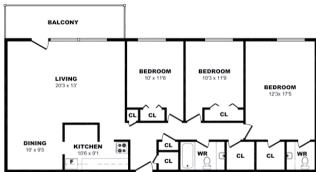
## 44 Stubbs Dr, North York - 3 Bdrm A

All dimensions are approximate. Sizes and specifications are subject to change without notice E. & O. E. All illustrations are artist's concept. Actual usable floor space may vary slightly from stated floor area.



## 44 Stubbs Dr, North York - 3 Bdrm B, 1235sf

All dimensions are approximate. Sizes and specifications are subject to change without notice E. & O. E. All illustrations are artist's concept. Actual usable floor space may vary slightly from stated floor area.



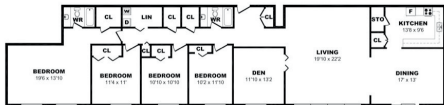
### 44 Stubbs Dr, North York - 3 Bdrm C

All dimensions are approximate. Sizes and specifications are subject to change without notice E. & O. E.  
All illustrations are artist's concept. Actual usable floor space may vary slightly from stated floor area.



### 44 Stubbs Dr, North York - 3 Bdrm + Den

All dimensions are approximate. Sizes and specifications are subject to change without notice E. & G. E. All illustrations are artist's concept. Actual visible floor space may vary slightly from stated floor area.



## 44 Stubbs Dr, North York - 4 Bdrm, 2210sf

All dimensions are approximate. Sizes and specifications are subject to change without notice E. & O. E. All illustrations are artist's concept. Actual usable floor space may vary slightly from stated floor area.