

1959-79 Marine Drive, North Vancouver - Bachelor A, 440sf

All dimensions are approximate. Sizes and specifications are subject to change without notice E. & O. E.
All illustrations are artist's concept. Actual usable floor space may vary slightly from stated floor area.

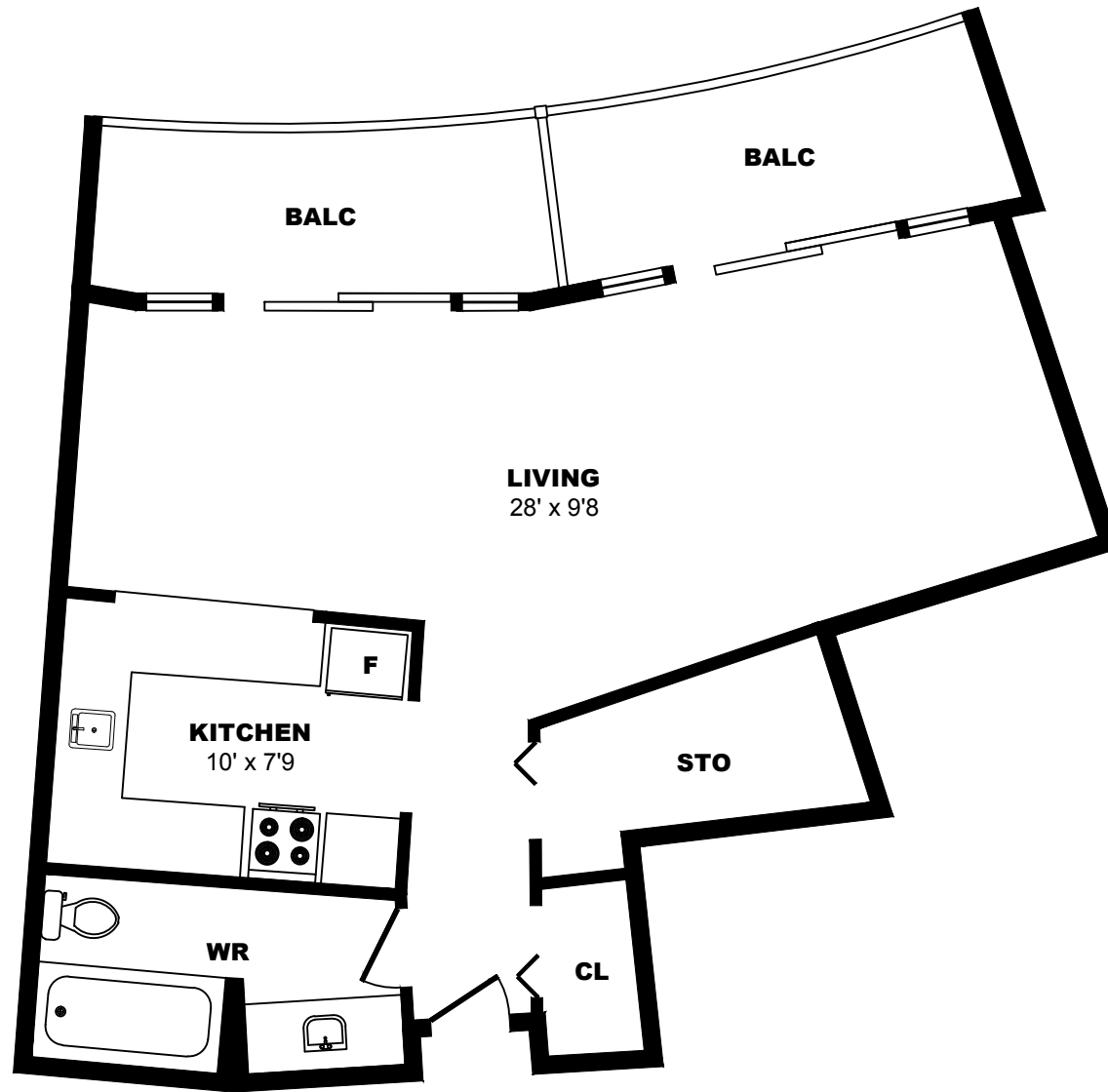




1959-79 Marine Drive, North Vancouver - Bachelor B, 400sf

All dimensions are approximate. Sizes and specifications are subject to change without notice E. & O. E.
All illustrations are artist's concept. Actual usable floor space may vary slightly from stated floor area.

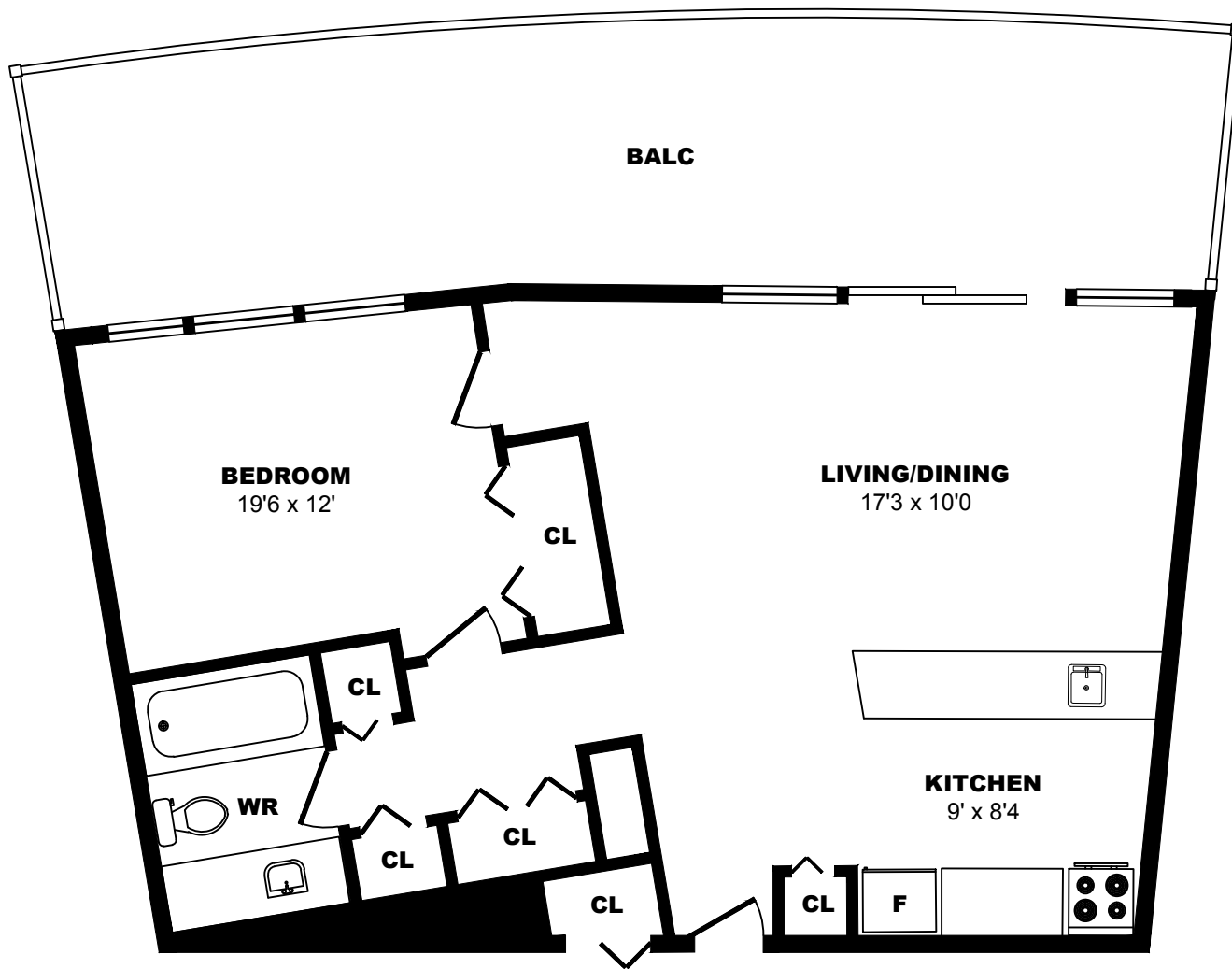




1959-79 Marine Drive, North Vancouver - Bachelor C, 500sf

All dimensions are approximate. Sizes and specifications are subject to change without notice E. & O. E.
All illustrations are artist's concept. Actual usable floor space may vary slightly from stated floor area.

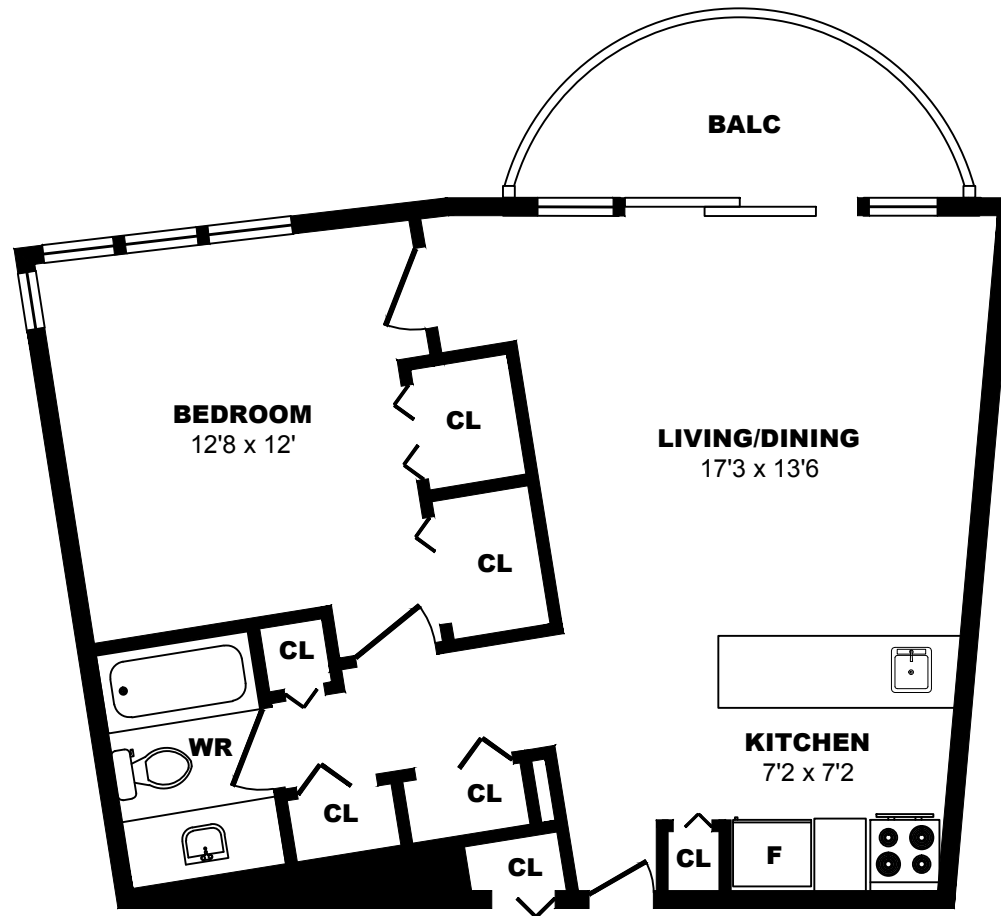




1959-79 Marine Drive, North Vancouver - 1 Bdrm A, 620sf

All dimensions are approximate. Sizes and specifications are subject to change without notice E. & O. E.
All illustrations are artist's concept. Actual usable floor space may vary slightly from stated floor area.

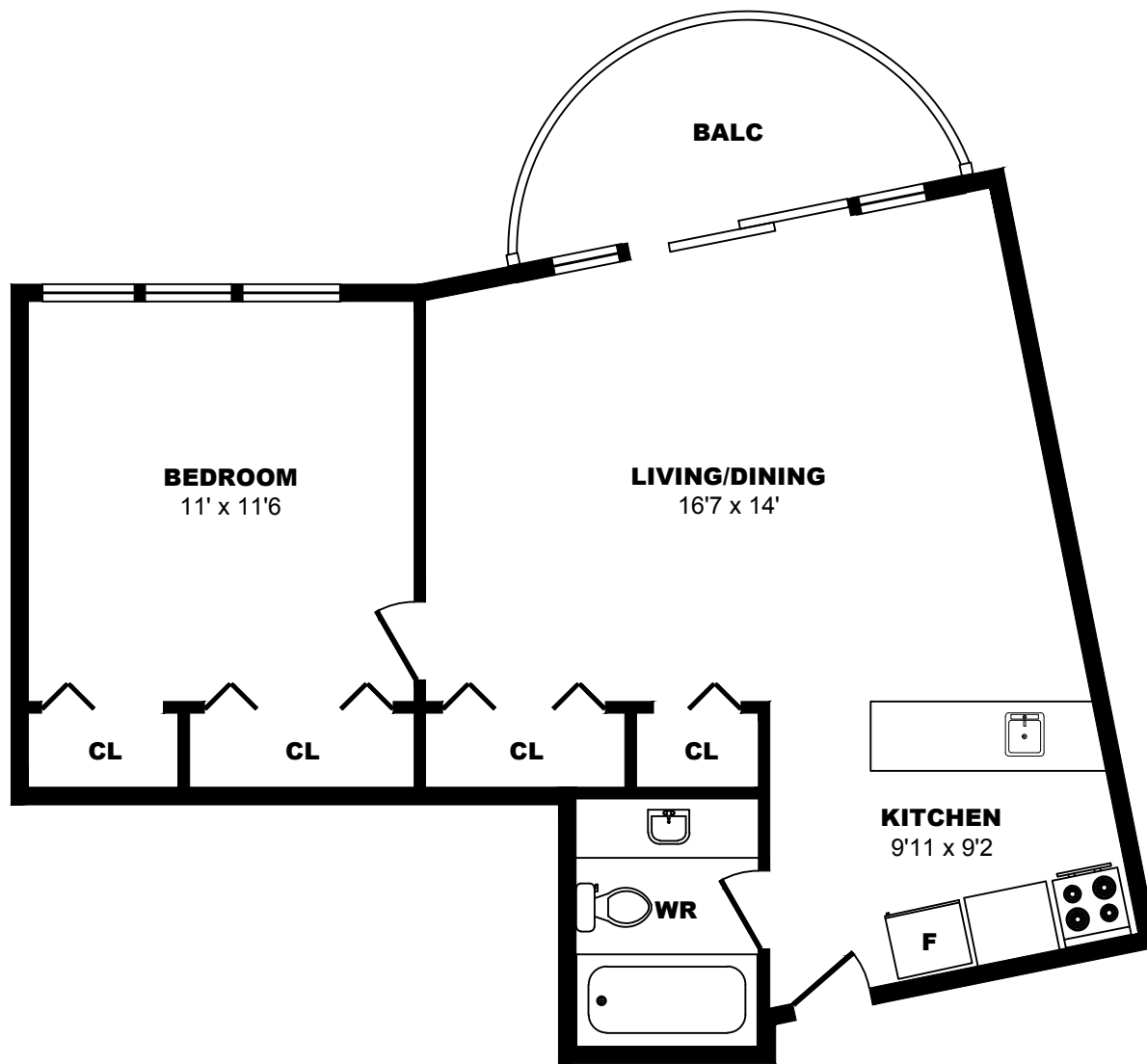




1959-79 Marine Drive, North Vancouver - 1 Bdrm B, 620sf

All dimensions are approximate. Sizes and specifications are subject to change without notice E. & O. E.
 All illustrations are artist's concept. Actual usable floor space may vary slightly from stated floor area.

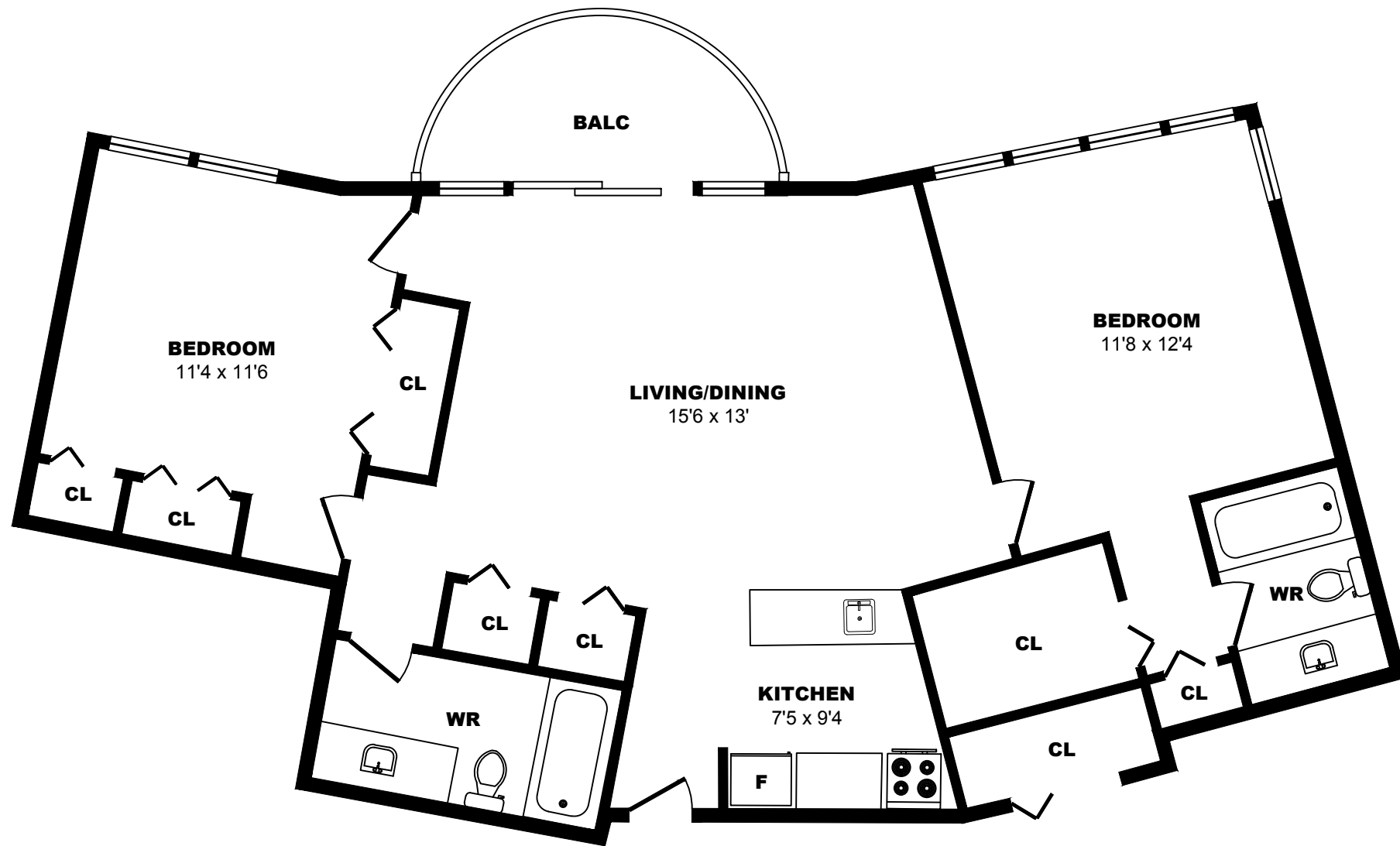




1959-79 Marine Drive, North Vancouver - 1 Bdrm C, 530sf

All dimensions are approximate. Sizes and specifications are subject to change without notice E. & O. E.
 All illustrations are artist's concept. Actual usable floor space may vary slightly from stated floor area.

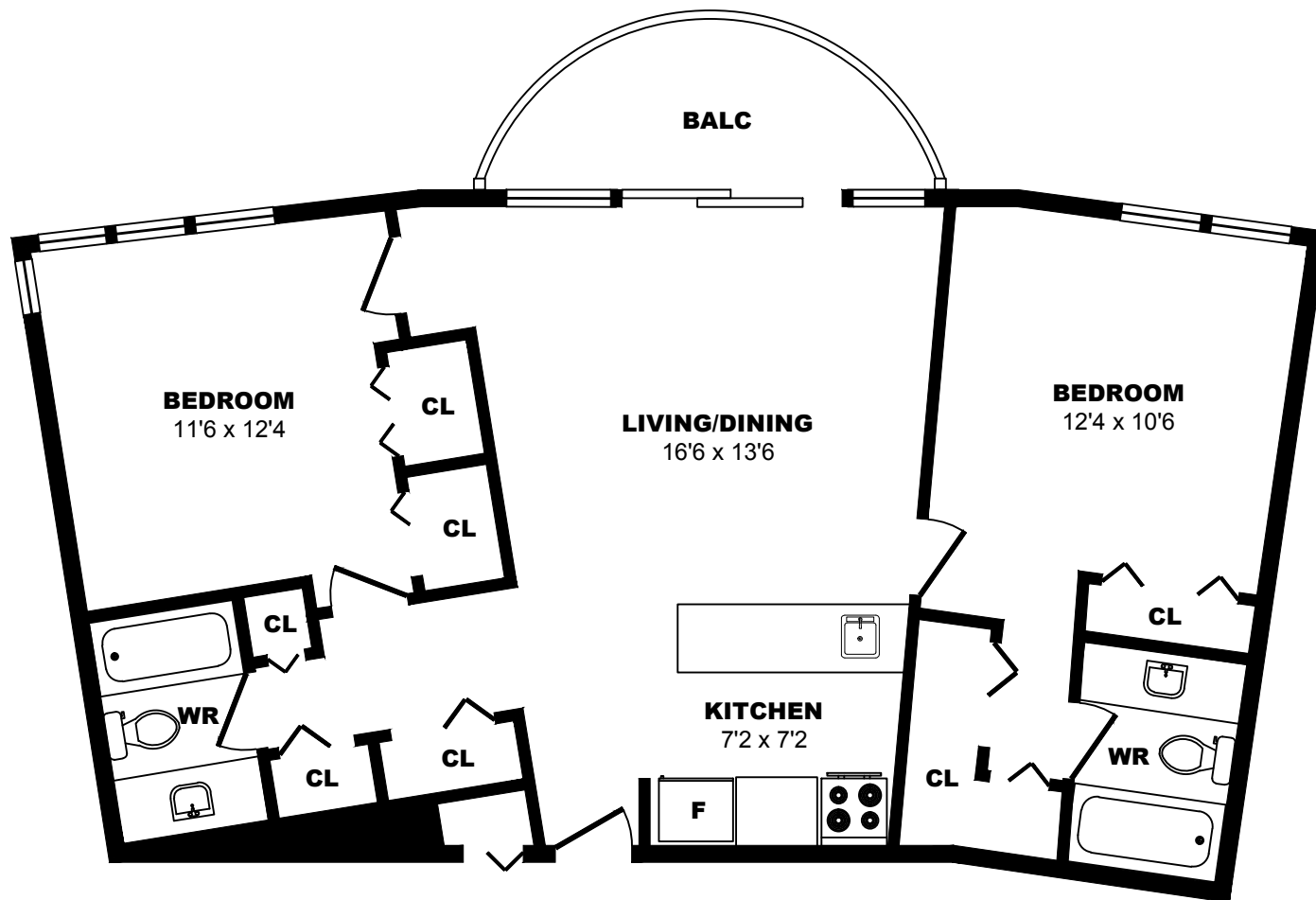




1959-79 Marine Drive, North Vancouver - 2 Bdrm A, 890sf

All dimensions are approximate. Sizes and specifications are subject to change without notice E. & O. E.
 All illustrations are artist's concept. Actual usable floor space may vary slightly from stated floor area.

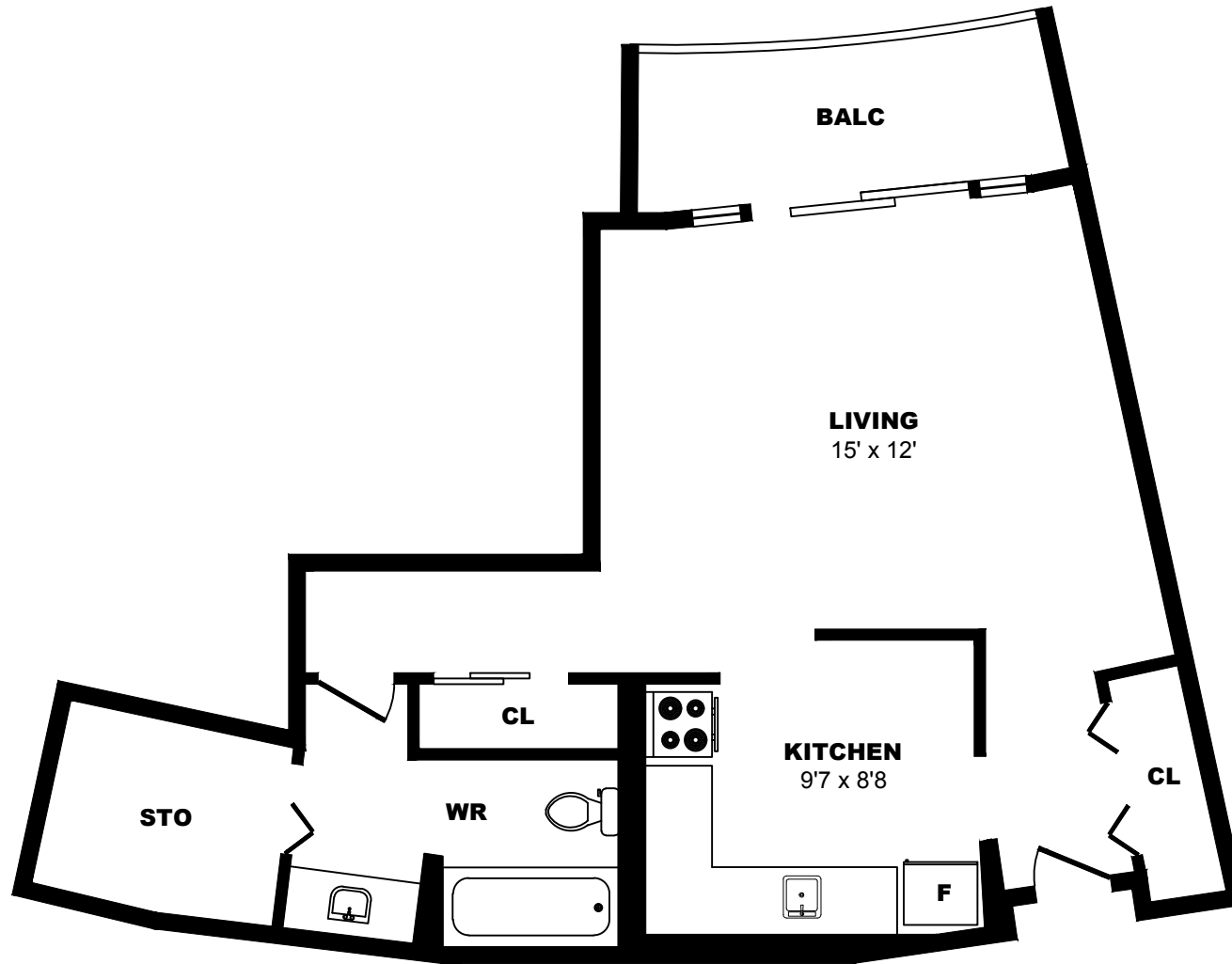




1959-79 Marine Drive, North Vancouver - 2 Bdrm B, 830sf

All dimensions are approximate. Sizes and specifications are subject to change without notice E. & O. E.
 All illustrations are artist's concept. Actual usable floor space may vary slightly from stated floor area.

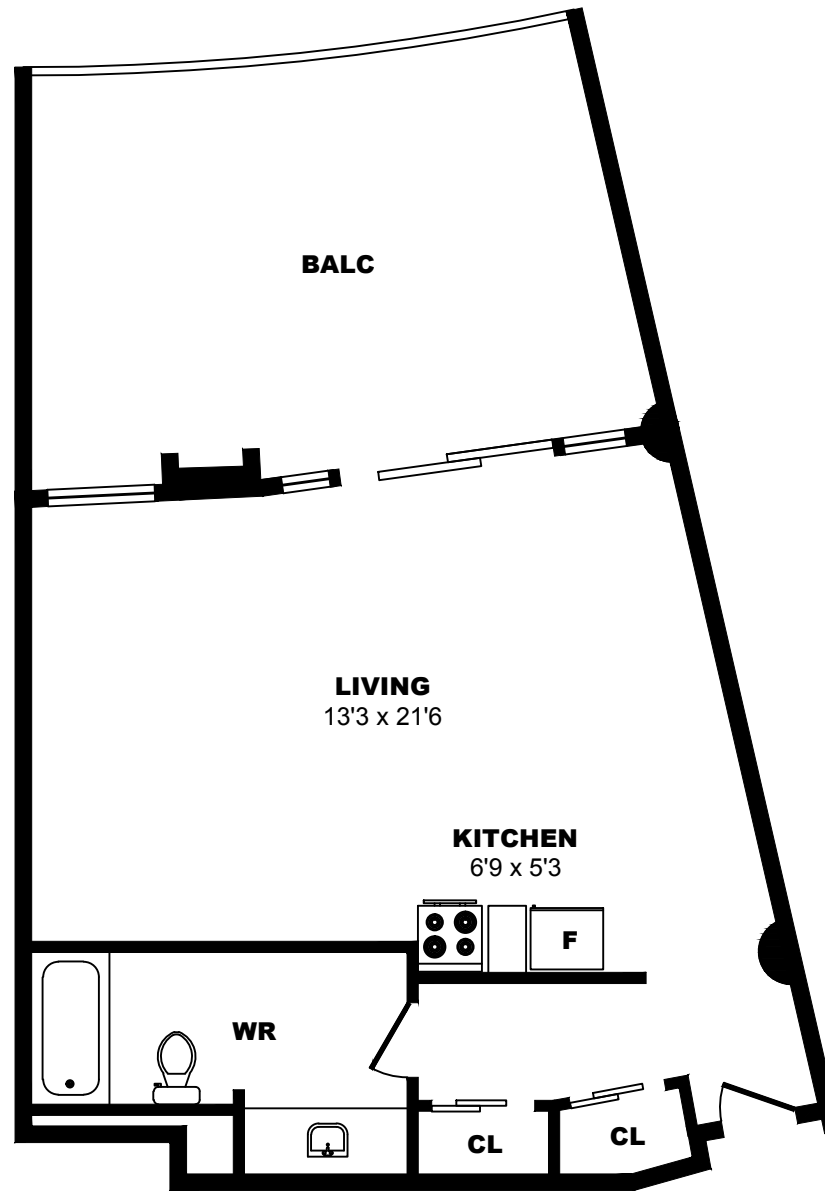




1989 Marine Drive, North Vancouver - Bachelor A, 480sf

All dimensions are approximate. Sizes and specifications are subject to change without notice E. & O. E.
All illustrations are artist's concept. Actual usable floor space may vary slightly from stated floor area.

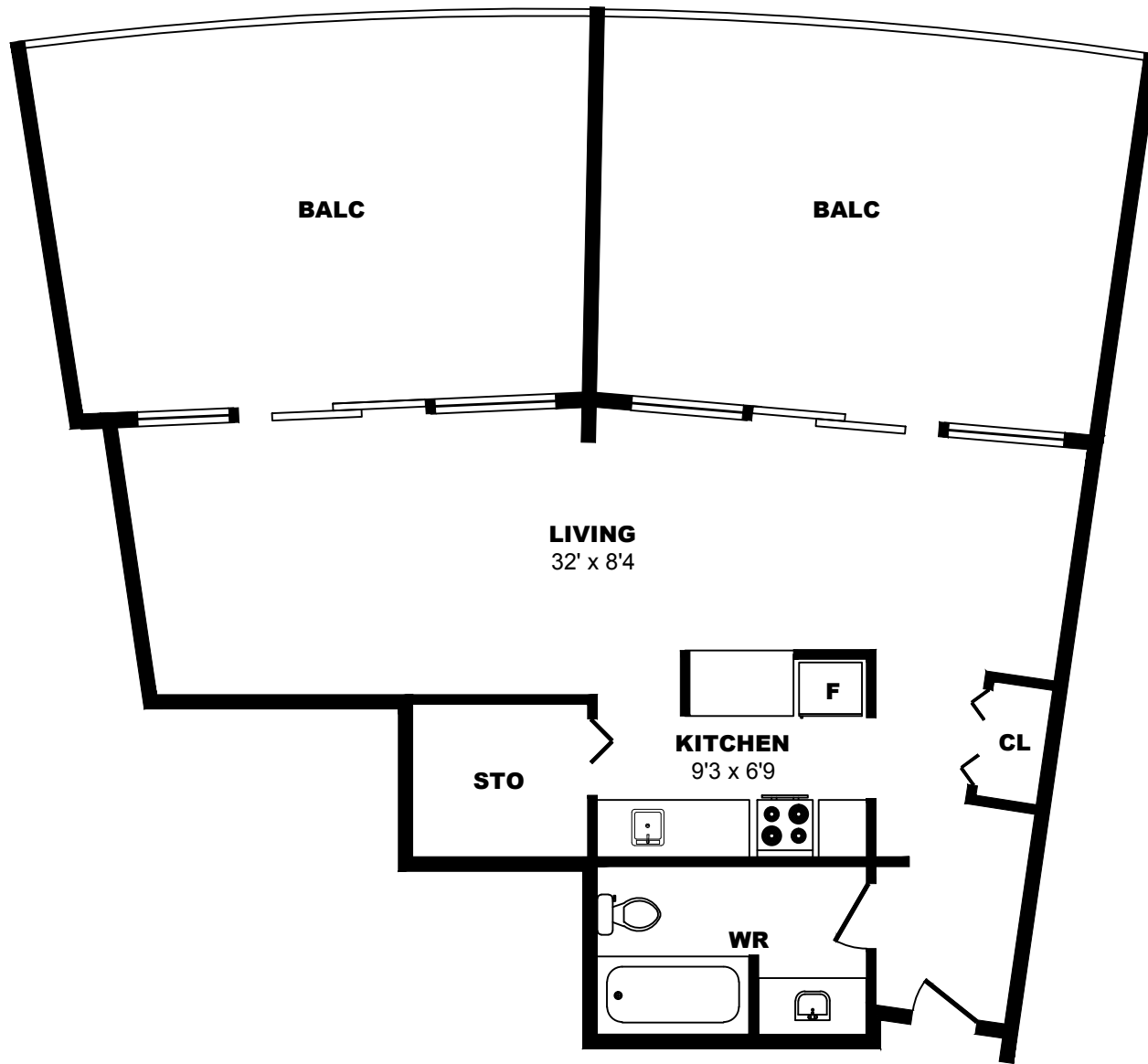




1989 Marine Drive, North Vancouver - Bachelor B, 440sf

All dimensions are approximate. Sizes and specifications are subject to change without notice E. & O. E.
All illustrations are artist's concept. Actual usable floor space may vary slightly from stated floor area.

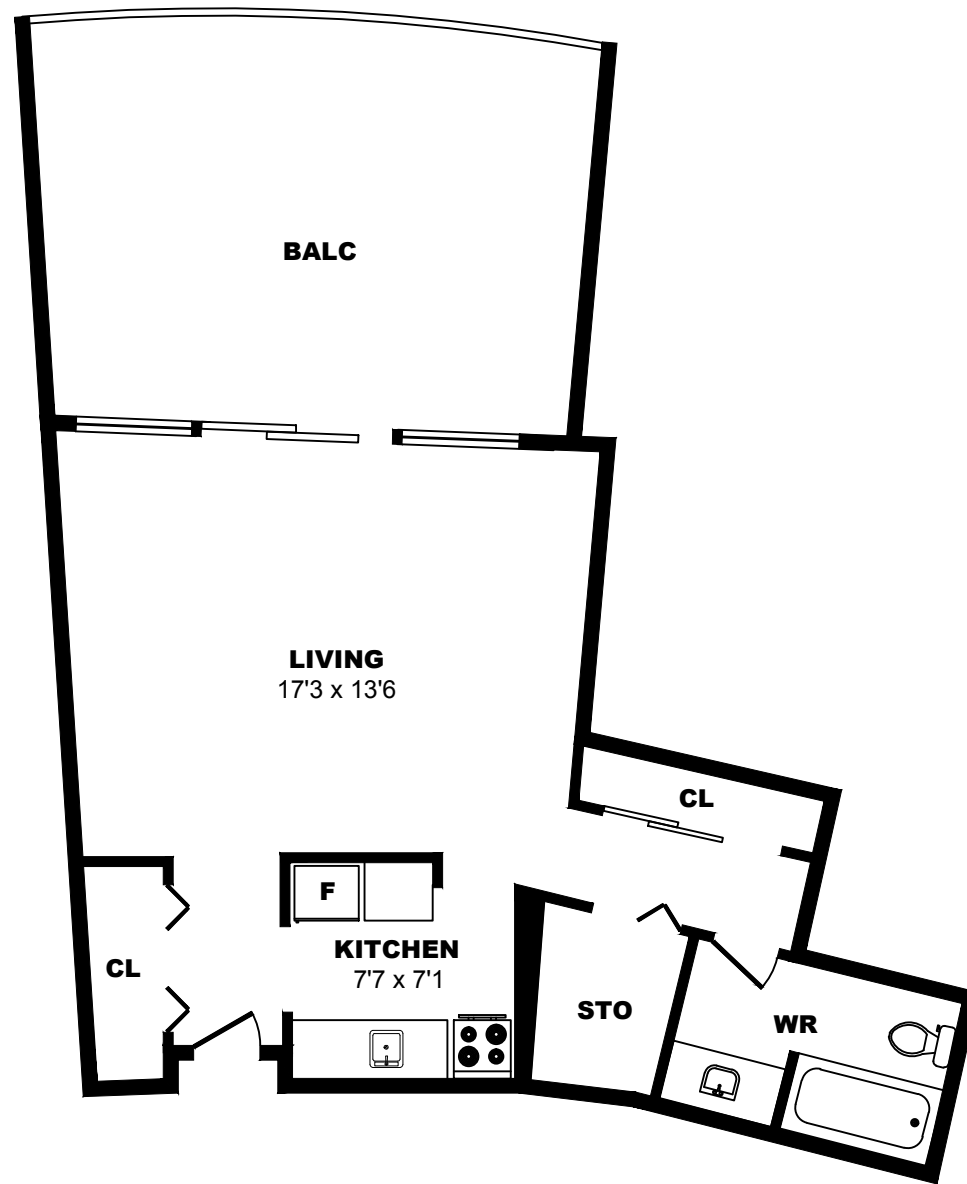




1989 Marine Drive, North Vancouver - Bachelor C, 510sf

All dimensions are approximate. Sizes and specifications are subject to change without notice E. & O. E.
All illustrations are artist's concept. Actual usable floor space may vary slightly from stated floor area.

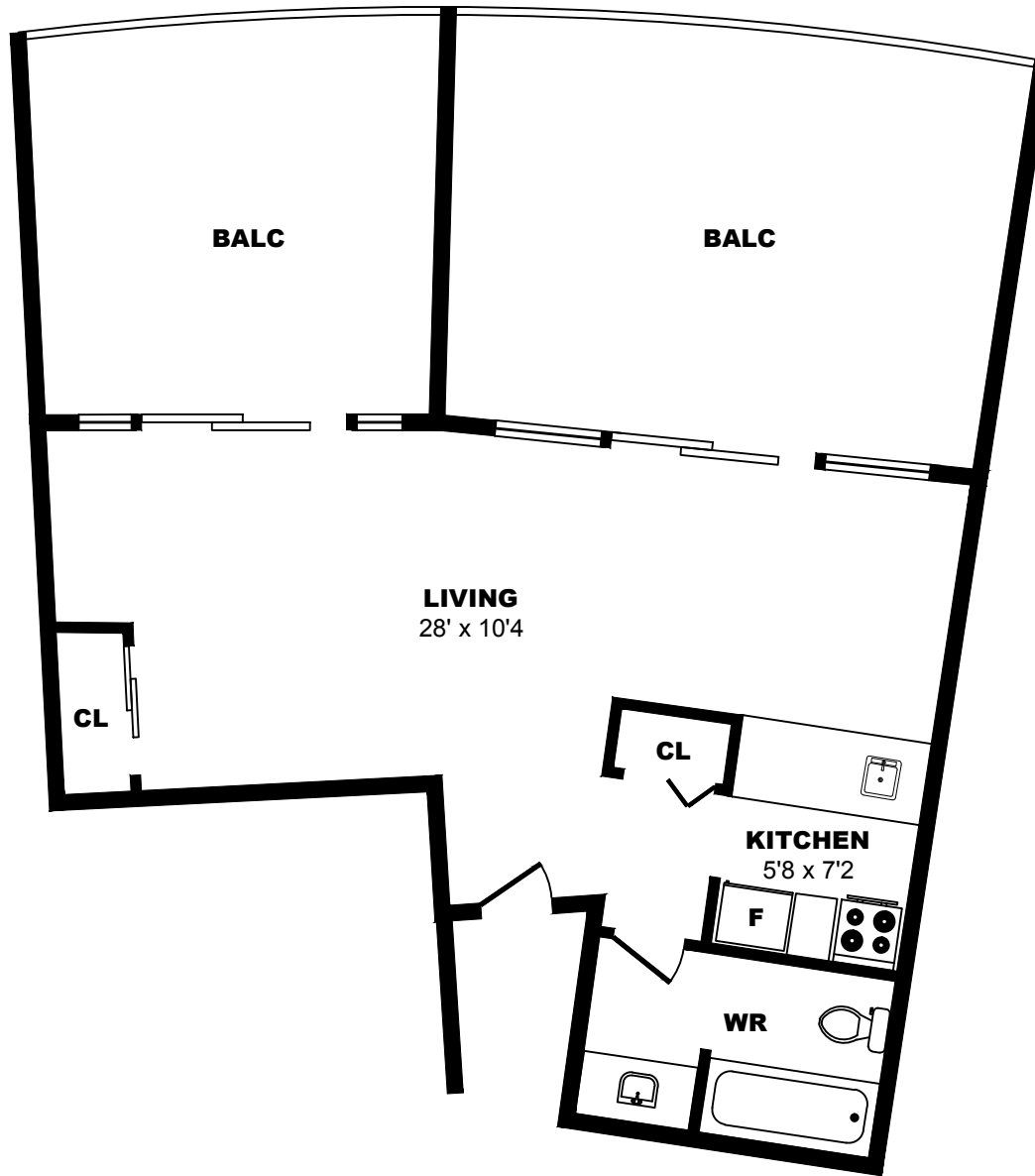




1989 Marine Drive, North Vancouver - Bachelor D, 480sf

All dimensions are approximate. Sizes and specifications are subject to change without notice E. & O. E.
All illustrations are artist's concept. Actual usable floor space may vary slightly from stated floor area.

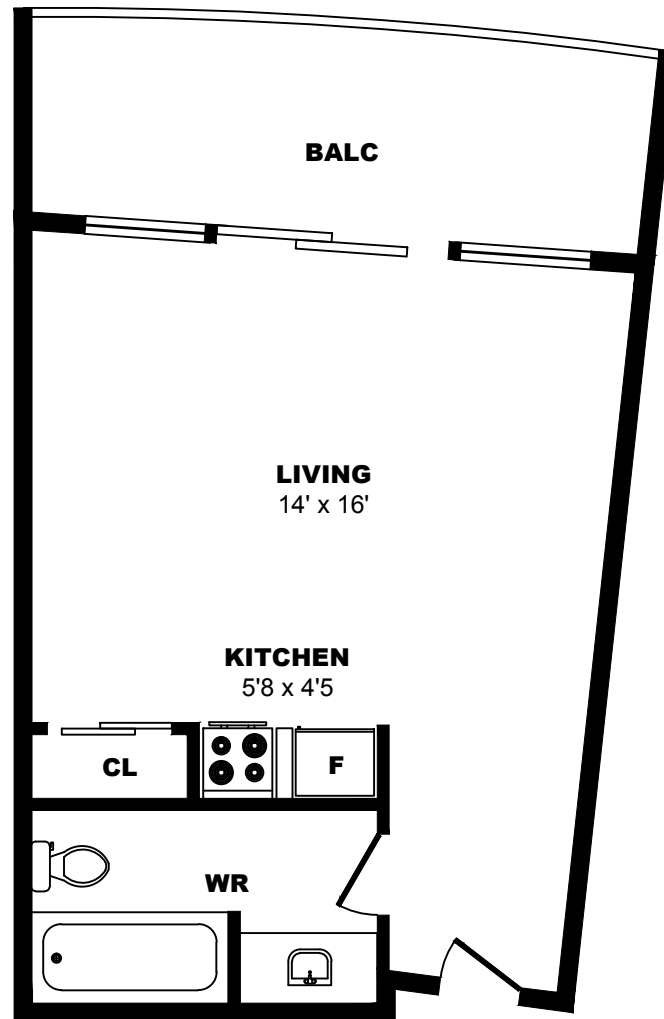




1989 Marine Drive, North Vancouver - Bachelor E, 430sf

All dimensions are approximate. Sizes and specifications are subject to change without notice E. & O. E.
All illustrations are artist's concept. Actual usable floor space may vary slightly from stated floor area.

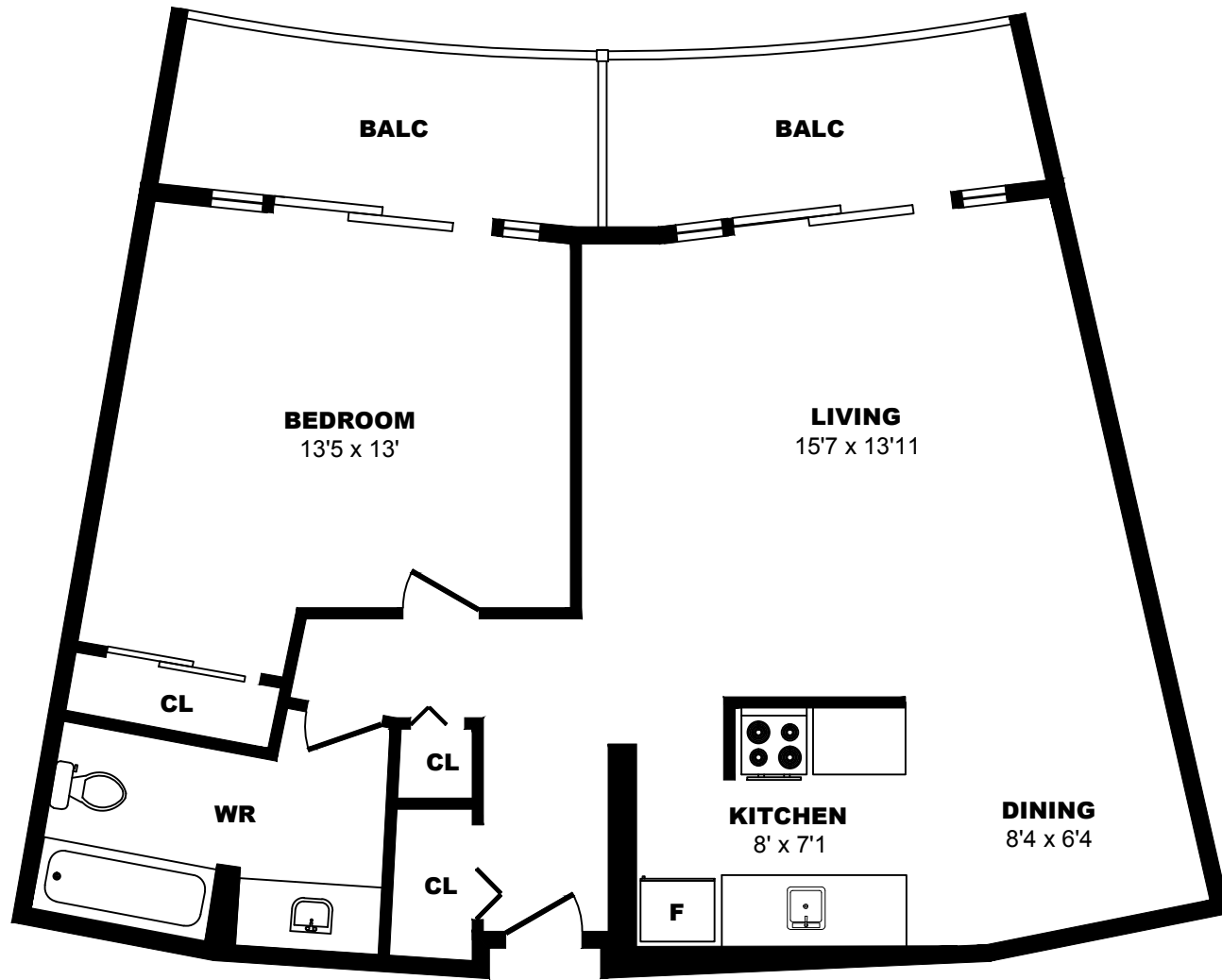




1989 Marine Drive, North Vancouver - Bachelor F, 320sf

All dimensions are approximate. Sizes and specifications are subject to change without notice E. & O. E.
All illustrations are artist's concept. Actual usable floor space may vary slightly from stated floor area.

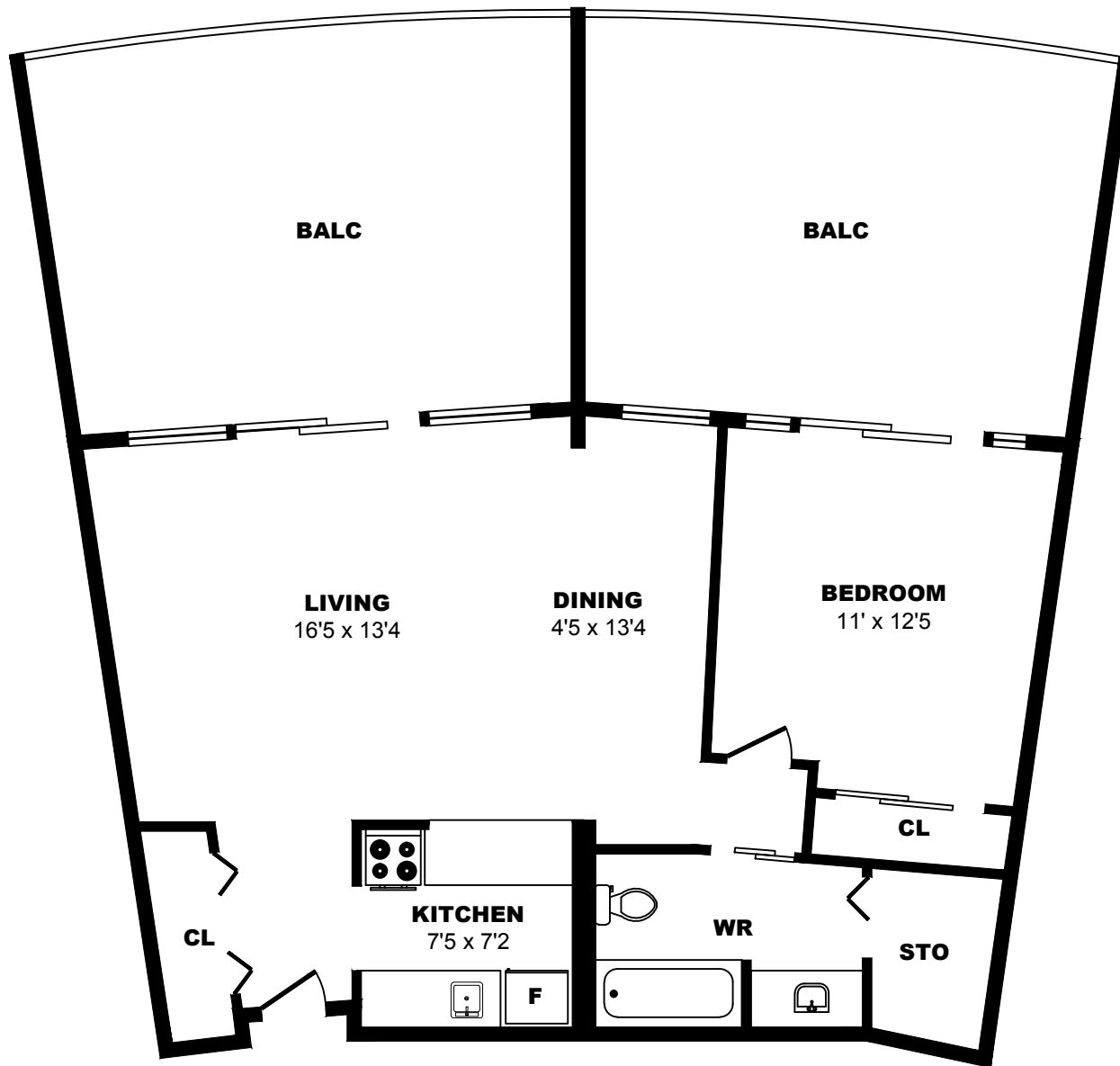




1989 Marine Drive, North Vancouver - 1 Bdrm A, 650sf

All dimensions are approximate. Sizes and specifications are subject to change without notice E. & O. E.
All illustrations are artist's concept. Actual usable floor space may vary slightly from stated floor area.

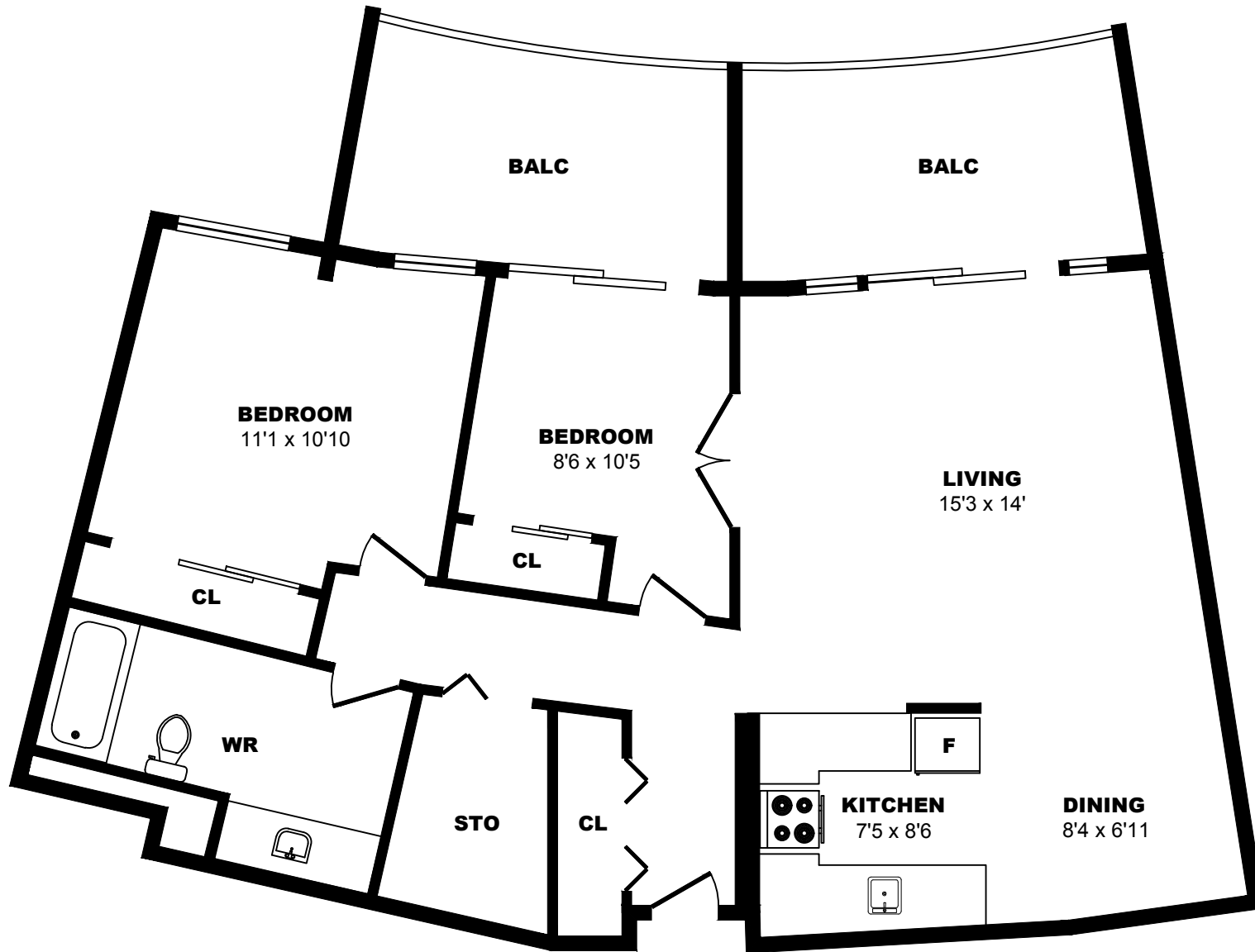




1989 Marine Drive, North Vancouver - 1 Bdrm B, 650sf

All dimensions are approximate. Sizes and specifications are subject to change without notice E. & O. E.
 All illustrations are artist's concept. Actual usable floor space may vary slightly from stated floor area.





1989 Marine Drive, North Vancouver - 2 Bdrm A, 790sf

All dimensions are approximate. Sizes and specifications are subject to change without notice E. & O. E.
 All illustrations are artist's concept. Actual usable floor space may vary slightly from stated floor area.

