

Park Villa Apartments

529 Tenth Street, New Westminster, BC



CAPREIT

10529-1A - 1 Bedroom (431 sq.ft.)

All dimensions are approximate and no responsibility is taken for any error, omission or misstatement. Size and specifications are subject to change without notice. This plan is for illustrative purposes only and should be used as such.

Park Villa Apartments

529 Tenth Street, New Westminster, BC



10529-1B - 1 Bedroom (650 sq.ft.)

All dimensions are approximate and no responsibility is taken for any error, omission or misstatement. Size and specifications are subject to change without notice. This plan is for illustrative purposes only and should be used as such.

Park Villa Apartments

529 Tenth Street, New Westminster, BC



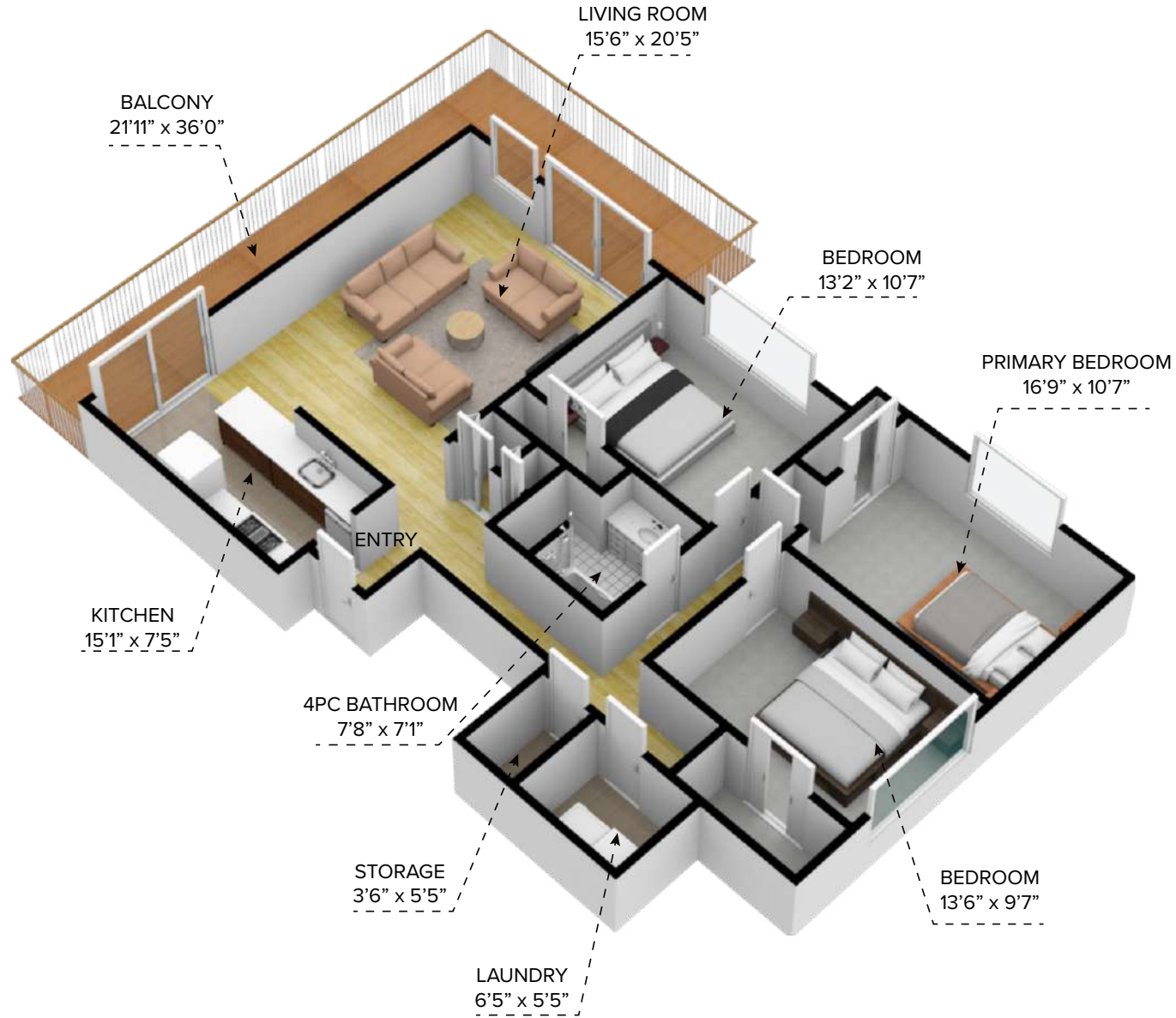
CAPREIT

10529-2A - 2 Bedroom (853 sq.ft.)

All dimensions are approximate and no responsibility is taken for any error, omission or misstatement. Size and specifications are subject to change without notice. This plan is for illustrative purposes only and should be used as such.

Park Villa Apartments

529 Tenth Street, New Westminster, BC



CAPREIT

10529-3A - 3 Bedroom (1281 sq.ft.)

All dimensions are approximate and no responsibility is taken for any error, omission or misstatement. Size and specifications are subject to change without notice. This plan is for illustrative purposes only and should be used as such.