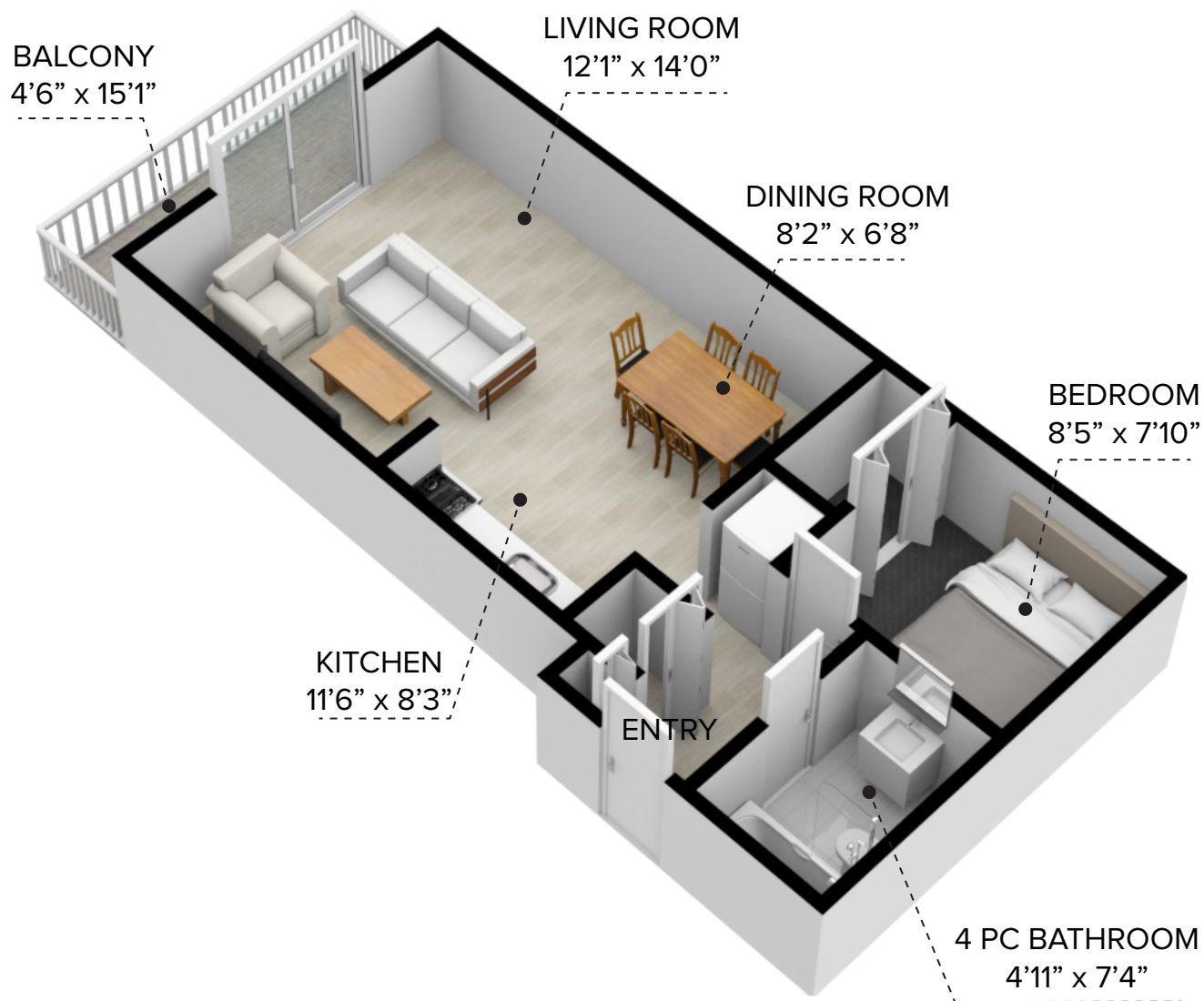


The Somerset Apartments

525 - 10 Street, New Westminster



CAPREIT

B1 - 1 Bedroom (519 sq.ft.)

All dimensions are approximate and no responsibility is taken for any error, omission or misstatement. Size and specifications are subject to change without notice. This plan is for illustrative purposes only and should be used as such

The Somerset Apartments

525 - 10 Street, New Westminster



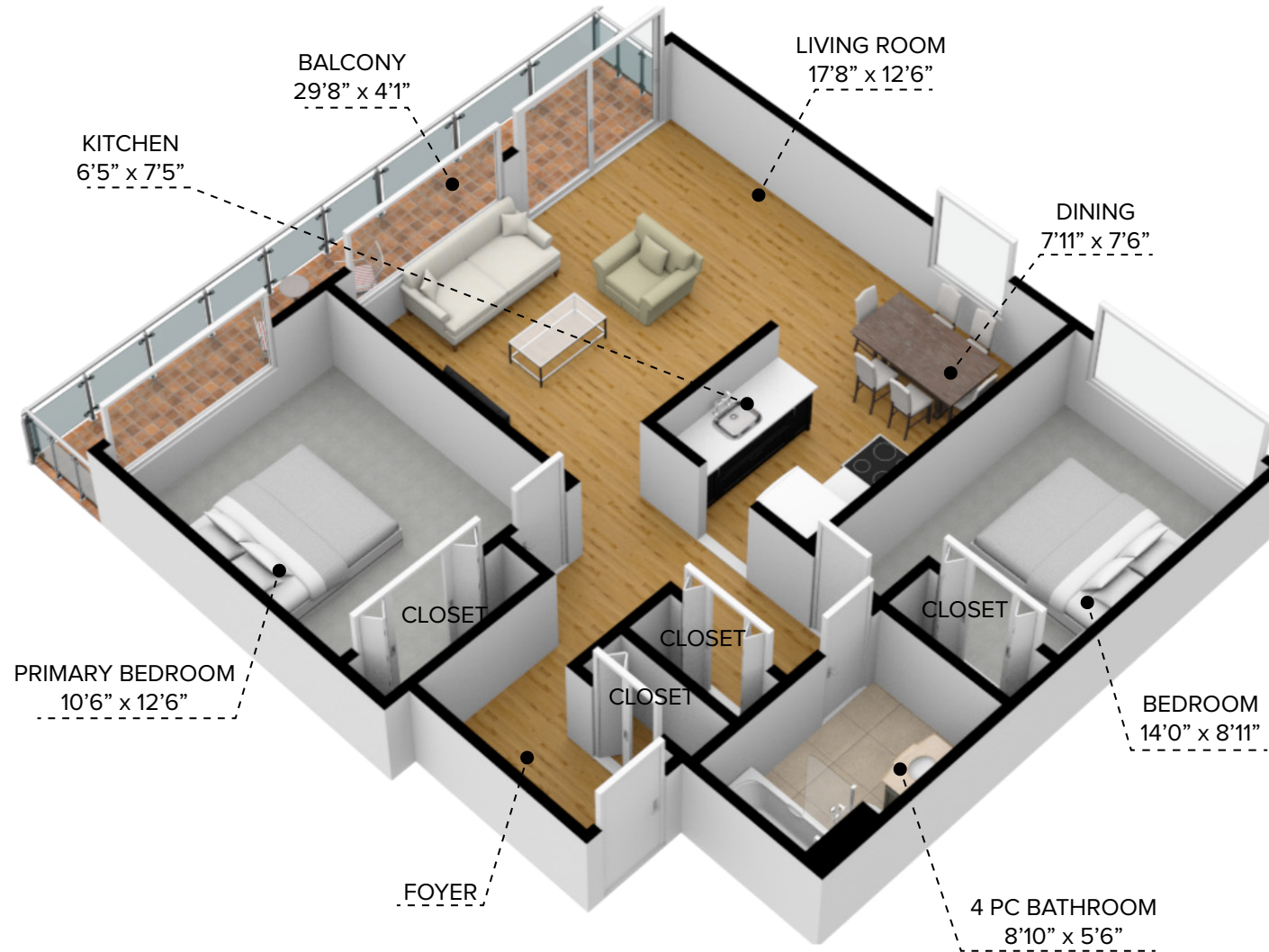
CAPREIT

B2 - 1 Bedroom (700 sq.ft.)

All dimensions are approximate and no responsibility is taken for any error, omission or misstatement. Size and specifications are subject to change without notice. This plan is for illustrative purposes only and should be used as such.

The Somerset Apartments

525 - 10 Street, New Westminster



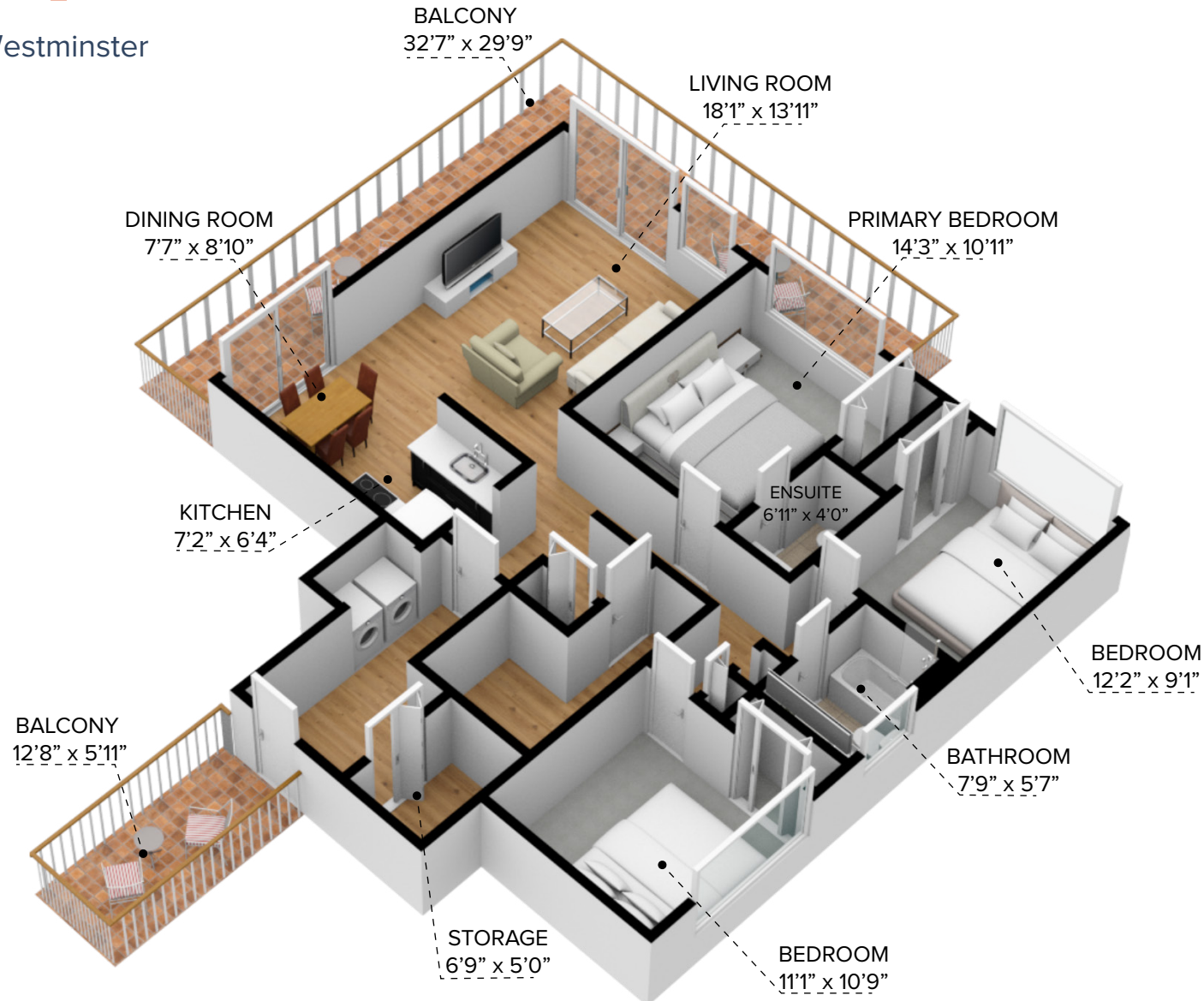
CAPREIT

D1 - 2 Bedroom (868 sq.ft.)

All dimensions are approximate and no responsibility is taken for any error, omission or misstatement. Size and specifications are subject to change without notice. This plan is for illustrative purposes only and should be used as such.

The Somerset Apartments

525 - 10 Street, New Westminster



All dimensions are approximate and no responsibility is taken for any error, omission or misstatement. Size and specifications are subject to change without notice. This plan is for illustrative purposes only and should be used as such.



CAPREIT

F1 - 3 Bedroom (1,287 sq.ft.)