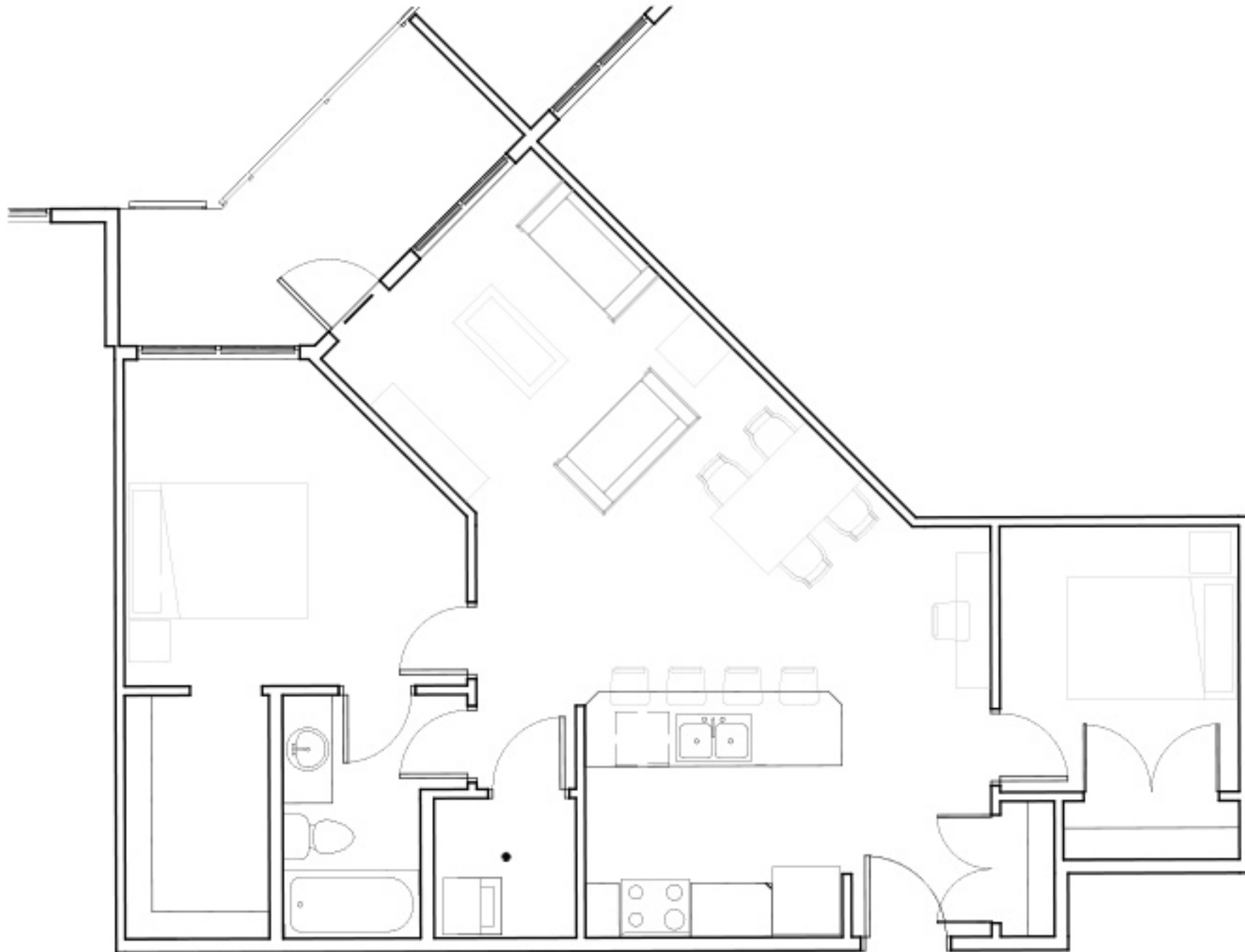


5363 - 201 Street, Langley - 2 bdrm, 758 sq ft

All dimensions are approximate. Sizes and specifications are subject to change without notice E. & O. E.
All illustrations are artist's concept. Actual usable floor space may vary slightly from stated floor area.





5363 - 201 Street, Langley - 2 bdrm, 885 sq ft

All dimensions are approximate. Sizes and specifications are subject to change without notice E. & O. E.
All illustrations are artist's concept. Actual usable floor space may vary slightly from stated floor area.

